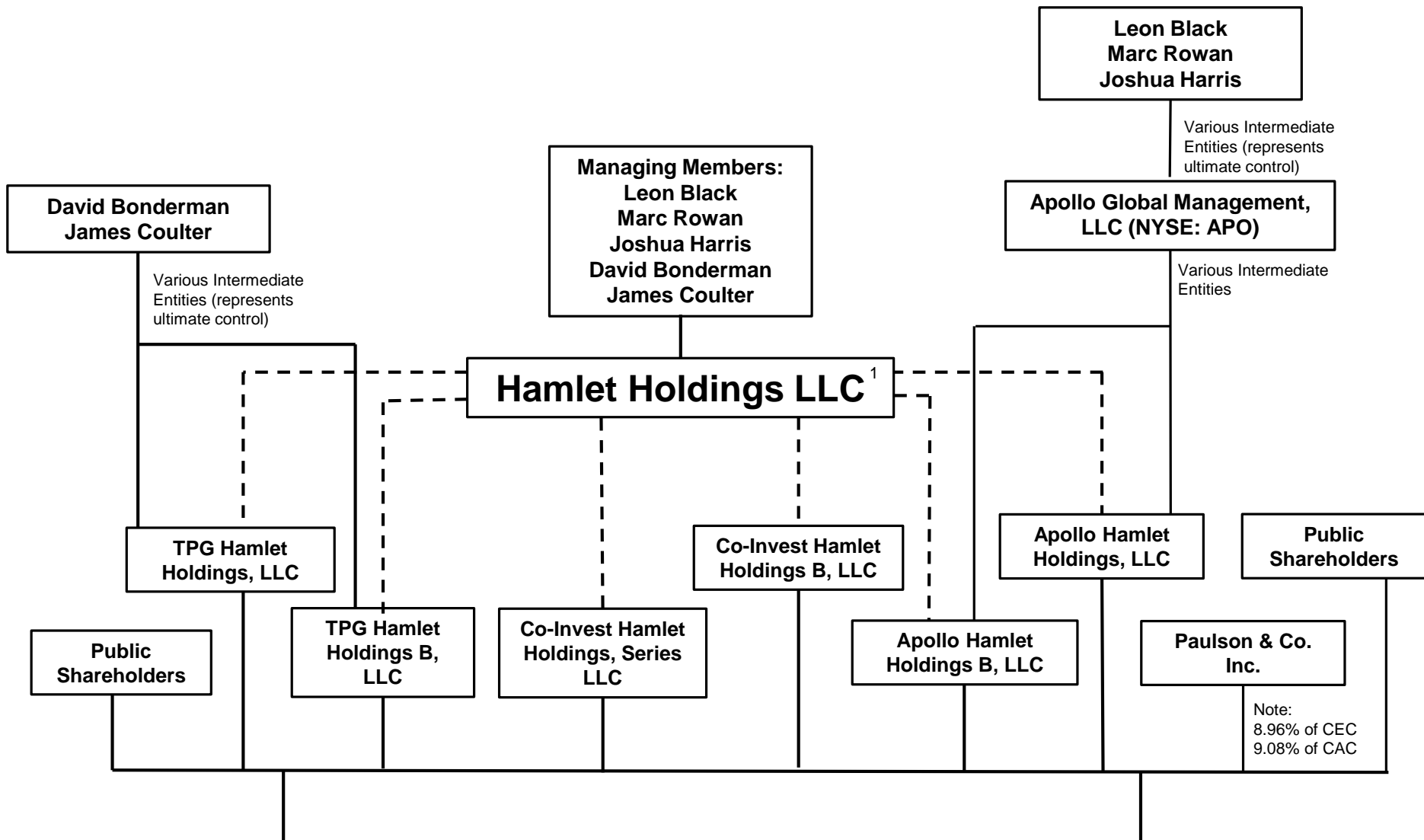
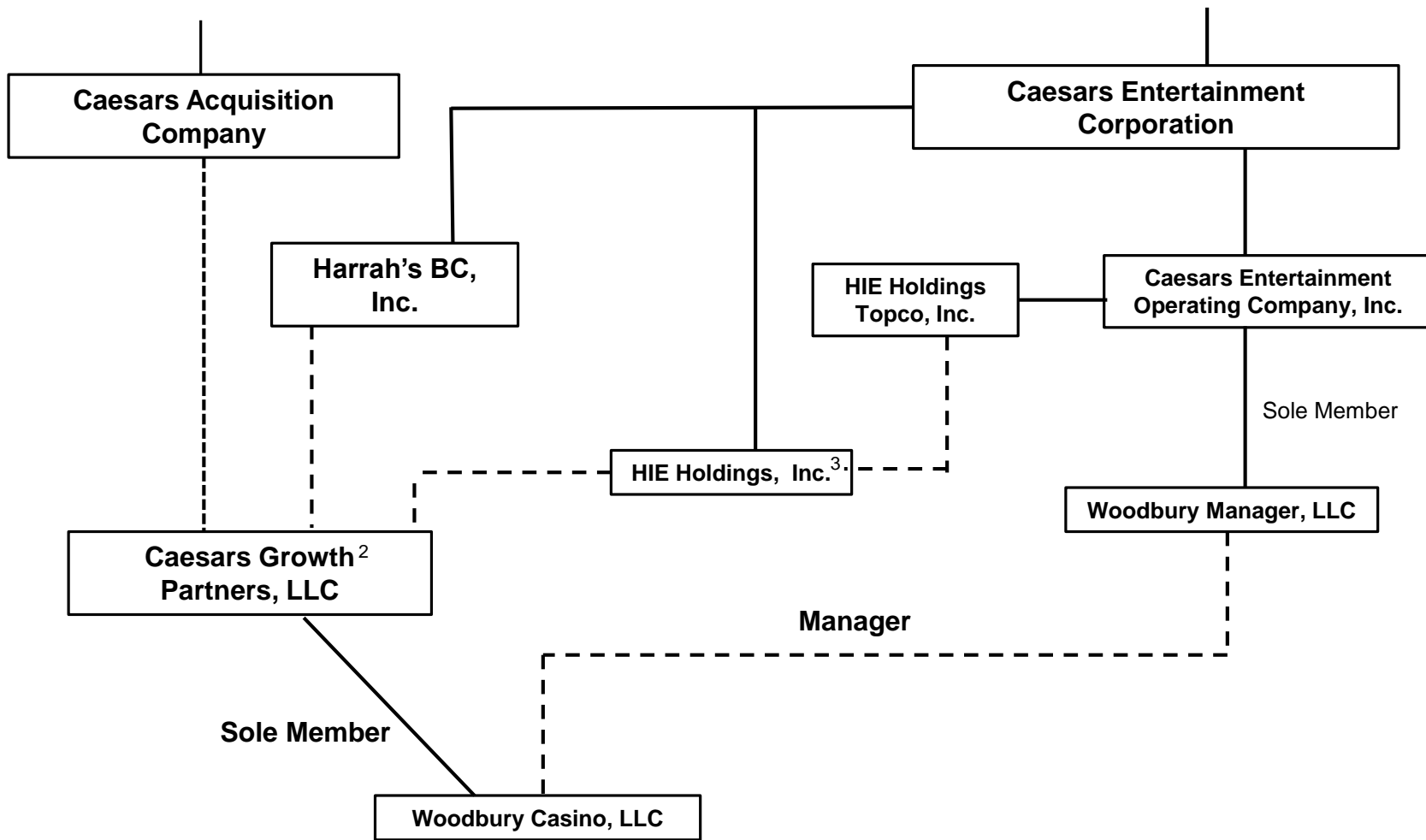


Attachment VIII.A.6.c_A3

Applicant Control Organizational Chart

6/30/2014





Note 1: Entities with a dotted line leading to Hamlet Holdings LLC have granted Hamlet Holdings LLC an irrevocable proxy to control the vote of their common stock.

Hamlet Holdings LLC currently controls 63.9% of the vote in CEC and 66.3% of the vote in CAC.

Note 2: Economic Interest of CGP: Caesars Acquisition Company 42.4%, Harrah's BC, Inc. 34.4%, HIE Holdings, Inc. 23.2%

Harrah's BC, Inc. holds 59.7% of non-voting units and HIE Holdings, Inc. holds 40.3% of the non-voting units of CGP
CAC holds 100% of the voting units of CGP

Note 3: CEC owns 100% of the common stock and 37.5% of the preferred stock of HIE Holdings, Inc.

Note 3 cont'd: HIE Holdings Topco, Inc. owns 62.5% of the preferred stock of HIE Holdings, Inc.