



**Gaming  
Commission**

# ANNUAL REPORT **2021**

---

DIVISION OF CHARITABLE GAMING

---

DIVISION OF GAMING

---

DIVISION OF HORSE RACING  
AND PARI-MUTUEL WAGERING

---

DIVISION OF LOTTERY



Letter from the Executive Director \_\_\_\_\_ 1

Locations of Gaming Facilities, Racetracks, and Customer Service Centers \_\_\_\_\_ 2

About the Commission \_\_\_\_\_ 3

Commissioners \_\_\_\_\_ 6

Division of Charitable Gaming \_\_\_\_\_ 8

Division of Gaming \_\_\_\_\_ 11

    Indian Gaming \_\_\_\_\_ 11

    Commercial Gaming \_\_\_\_\_ 12

    Video Lottery Gaming \_\_\_\_\_ 14

    Interactive Fantasy Sports \_\_\_\_\_ 15

Division of Horse Racing and Pari-Mutuel Wagering \_\_\_\_\_ 16

    Office of The Equine Medical Director \_\_\_\_\_ 25

Division of Lottery \_\_\_\_\_ 27

    Traditional Lottery \_\_\_\_\_ 27

    Video Lottery Gaming \_\_\_\_\_ 28

Minority- and Women-Owned Business \_\_\_\_\_ 30

Bureau of Licensing \_\_\_\_\_ 30

Responsible Gaming \_\_\_\_\_ 32

Rulemaking \_\_\_\_\_ 33

To: The Honorable Andrew M. Cuomo, Governor of New York  
Members of the New York State Legislature  
Robert F. Mujica, Director of the Budget  
March 31, 2022

On behalf of the New York State Gaming Commission, I respectfully submit this 2021 Annual Report, as required by N.Y. Racing, Pari-Mutuel Wagering and Breeding Law Section 104(18). Incorporated into this Report is the simulcast report required by N.Y. Racing, Pari-Mutuel Wagering and Breeding Law Sections 236(2), 318(1)(a)(iii), 318(1)(b)(i), and 1002(2). Financial information and other data provided for the Division of Lottery and the Division of Gaming are by the State's fiscal year; all other financial information and data is on a calendar year basis.

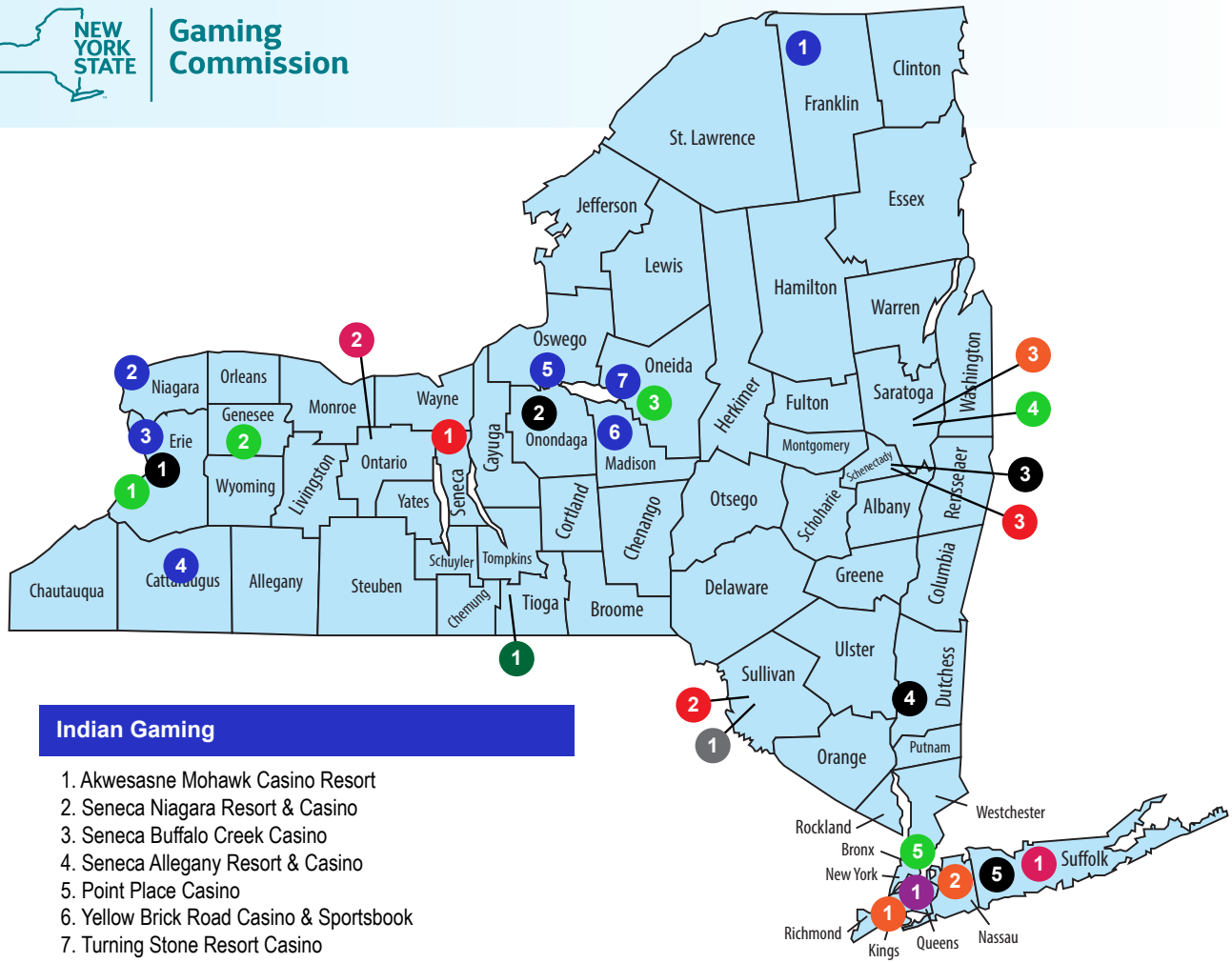
Respectfully Submitted,



Robert Williams  
*Executive Director*



**Gaming Commission**



**Indian Gaming**

1. Akwesasne Mohawk Casino Resort
2. Seneca Niagara Resort & Casino
3. Seneca Buffalo Creek Casino
4. Seneca Allegany Resort & Casino
5. Point Place Casino
6. Yellow Brick Road Casino & Sportsbook
7. Turning Stone Resort Casino

**Video Lottery & Harness Racetracks**

1. Hamburg Gaming & Buffalo Raceway at The Fairgrounds
2. Batavia Downs Gaming & Hotel
3. Vernon Downs Casino Hotel
4. Saratoga Casino Hotel
5. Empire City Casino by MGM Resorts / Yonkers Raceway

**Stand-Alone Video Lottery Gaming Properties**

1. Jake's 58 Casino Hotel

**Video Lottery at Thoroughbred Racetracks**

1. Resorts World New York City at Aqueduct Racetrack
2. Finger Lakes Gaming & Racetrack

**Thoroughbred Racetracks**

1. Aqueduct Racetrack
2. Belmont Race Track
3. Saratoga Race Course

**Lottery Customer Service Centers**

1. Buffalo
2. Syracuse
3. Schenectady
4. Fishkill
5. Plainview

**Commercial Casino & Harness Racetrack**

1. Tioga Downs Casino Resort & Harness Racing

**Commercial Gaming**

1. del Lago Resort & Casino
2. Resorts World Catskills
3. Rivers Casino & Resort Schenectady

**Stand-Alone Harness Racetrack**

1. Monticello Raceway

## About The Commission

### Mission Statement

It is the Mission of the New York State Gaming Commission to ensure that all lawful gaming and horse racing activity conducted in this State is of the highest integrity, credibility and quality. Operating in the most efficient and transparent manner, the Commission conducts the New York Lottery and serves the best interests of the public by providing responsive and effective state gaming regulation. The Commission strives to ensure that all stakeholders in the gaming and horse racing industries, including the consumers who wager on activities regulated or operated by the Commission, are treated in an equitable and responsible manner and to promote the health and safety of horses and all participants in racing. By consolidating various regulatory functions into one oversight body with broad powers, the Commission seeks to ensure fair and strict regulation of all gaming activity while reducing costs and regulatory burdens to the gaming industry. The Commission aspires to provide the regulatory structure necessary for New York gaming activity to operate effectively in a global, evolving and increasingly competitive marketplace to generate revenue for aid to education and for the support of government, and to contribute to overall economic development and job creation in New York.

### Services to the Public

The Commission regulates and provides oversight for all aspects of lawful gaming and gaming-like activity in the State, including charitable gaming; gaming, which includes commercial casinos, video lottery gaming and Class III Indian gaming; horse racing and pari-mutuel wagering; the State Lottery; and interactive fantasy sports which, by law, is not considered gambling.

### Division of Charitable Gaming

Division staff issue identification and registration numbers to qualified religious, charitable, and not-for-profit organizations for charitable gaming activities and consider applications for licenses to gaming suppliers. The Division also conducts outreach training seminars at various locations around the State and interacts with organizations that request guidance or have regulatory issues.

### Division of Gaming

#### Commercial Gaming

Division staff at each of New York's four commercial casinos are responsible for regulatory reviews of operations and to ensure the gaming is conducted in accordance with all applicable laws, rules, and regulations. The Division also conducts or causes the conduct of background investigations on all employees of the casino and related enterprises who conduct gaming-related business with each facility.

#### Class III Indian Gaming

Pursuant to each tribal-state compact, the Division staff jointly regulates or oversees Class III gaming facilities with a Nation or Tribal Gaming Agency. The Division maintains a presence at each of the seven Class III Indian Gaming facilities to maintain the integrity of all activities and to ensure the fair and honest operation of all gaming activities. In addition, the Division conducts or causes the conduct background investigations on all employees of the casino and related enterprises who conduct certain business to ensure their suitability.

#### Interactive Fantasy Sports

Division staff is responsible for reviewing applications for registration and issuing temporary operating permits for entities wishing to engage in Interactive Fantasy Sports within the State. Staff also reviews and considers requests for contests.

### Video Lottery Gaming

The Commission has staff located at each of the eight video lottery gaming facilities. Staff perform regular operational reviews to ensure gaming is conducted in accordance with all applicable laws, rules, and regulations. Additionally, the Division conducts or causes to be conducted background investigations on all employees of the facility and certain enterprises who conduct business with each facility.

## Division of Horse Racing and Pari-Mutuel Wagering

Division staff provide oversight and regulation of horse racing and pari-mutuel wagering. Staff is responsible for the regulation of the racing and wagering operators to ensure business is conducted in accordance with all applicable laws, rules, and regulations. This includes the review of applications for occupational licenses.

## Division of Lottery

### Traditional Lottery

The Division of Lottery maintains regional staff who provide licensed sales agents with on-going support in inventory management, promotions, and responsible sales practices. Lottery staff also engage in ongoing retailer recruitment. In addition, Lottery operates five stand-alone regional Customer Service Centers which process claims.

## Calendar Year 2021 Commission Meetings

- 1/26/2021
- 3/15/2021
- 5/17/2021
- 6/29/2021
- 8/16/2021
- 11/8/2021

## Landmark Gaming Law, Rulemaking and Regulation

- ◆ 1821: State Constitution prohibits new lotteries.
- ◆ 1846: State Constitution prohibits all lotteries.
- ◆ 1894: State Constitution prohibits all forms of gambling.
- ◆ 1939: Pari-mutuel betting on horse racing is authorized.
- ◆ 1957: Charitable bingo authorized.
- ◆ 1966: State Lottery authorized.
- ◆ 1975: Charitable games of chance are authorized.
- ◆ 1981: Lottery subscriptions begin with Lotto.
- ◆ 1993: New York enters a Class III Gaming Compact with the Oneida Indian Nation.
- ◆ 1993: New York enters a Class III Gaming Compact with Saint Regis Mohawk Tribe.
- ◆ 2001: Video lottery gaming is authorized.
- ◆ 2002: New York enters a Class III Gaming Compact with Seneca Nation of Indians.
- ◆ 2013: The Upstate New York Gaming and Economic Development Act is signed into law.
- ◆ 2013: State Constitution is amended to authorize casino gaming at no more than seven facilities statewide.
- ◆ 2014: Gaming Facility Location Board unanimously approves selections for three entities for consideration for commercial gaming facility licensure.

- ◆ 2015: Commission awards gaming facility licenses to the three applicants.
- ◆ 2016: Gaming Facility Location Board unanimously selects a fourth entity for consideration for commercial gaming facility licensure.
- ◆ 2016: The operation of Interactive Fantasy Sports is authorized.
- ◆ 2018: The Supreme Court of the United States overturns the Professional and Amateur Sports Protection Act that prevented states other than Delaware, Montana, Nevada, Oregon from regulating sports wagering.
- ◆ 2019: Commission adopts sports wagering regulations for commercial casinos.

## Notable Dates in New York’s Gambling History

- ◆ 1838: Goshen Historic Track opens.
- ◆ August 3, 1863: Saratoga Race Course conducts its first organized meet.
- ◆ September 27, 1894: Aqueduct Racetrack opens.
- ◆ 1899: Yonkers Raceway opens.
- ◆ September 20, 1940: Batavia Downs opens.
- ◆ 1941: Saratoga Raceway opens.
- ◆ June 1942: Buffalo Raceway at the Fairgrounds opens.
- ◆ 1953: Vernon Downs opens.
- ◆ June 27, 1958: Monticello Raceway opens.
- ◆ May 23, 1962: Finger Lakes Racetrack opens.
- ◆ June 1, 1967: The first day of sales for the New York Lottery.
- ◆ April 8, 1971: New York City Off-Track Betting formed.
- ◆ 1973: Western Regional Off-Track Betting Corporation formed.
- ◆ 1975: Suffolk Off-Track Betting Corporation, Nassau Off-Track Betting Corporation, Capital Region Off-Track Betting Corporation formed.
- ◆ 1976:
  - Catskill Off-Track Betting Corporation formed.
  - Tioga Park opens (later to become Tioga Downs).
  - October 11, 1976: The first \$1 million Lottery winner.
- ◆ January 22, 1989: “Quick Pick” player option introduced.
- ◆ July 20, 1993: Turning Stone Casino opens.
- ◆ September 6, 1995: The Quick Draw game starts.
- ◆ April 12, 1999: Akwesasne Mohawk Casino opens.
- ◆ 2002:
  - May 2002: New York Lottery joins Mega Millions.
  - December 31, 2002: Seneca Niagara Casino opens.

- ◆ 2004:
  - January 28, 2004: Video lottery gaming facility opens at Saratoga Casino & Raceway.
  - February 18, 2004: Video lottery gaming facility opens at Finger Lakes Gaming & Racetrack.
  - March 17, 2004: Video lottery gaming facility opens at Fairgrounds Gaming & Raceway.
  - May 1, 2004: Seneca Allegany Casino opens.
  - June 30, 2004: Video lottery gaming facility opens at Mighty M Gaming at Monticello Raceway.
- ◆ May 18, 2005: Video lottery gaming facility opens at Batavia Downs Gaming.
- ◆ 2006:
  - July 4, 2006: Video lottery gaming facility opens at Tioga Downs Gaming Racing Entertainment.
  - October 11, 2006: Video lottery gaming facility opens at Empire City at Yonkers Raceway.
  - October 26, 2006: Video lottery gaming facility opens at Vernon Downs Gaming Racing Entertainment.
- ◆ July 3, 2007: Seneca Buffalo Creek Casino opens.
- ◆ February, 2010: New York Lottery joins Powerball.
- ◆ December 7, 2010: New York City OTB closes.
- ◆ October 28, 2011: Video lottery gaming facility opens at Resorts World Casino New York City.
- ◆ December 1, 2016: The first commercial gaming facility opens at Tioga Downs.
- ◆ 2017:
  - January 31, 2017: The second commercial gaming facility opens at del Lago.
  - February 6, 2017: The third commercial gaming facility opens at Rivers.
  - February 27, 2017: Video lottery gaming facility opens at Jake’s 58.
- ◆ February 5, 2018: The fourth commercial gaming facility opens at Resorts World Catskills.
- ◆ July 16, 2019: First lawful sports wager made in New York at Rivers.
- ◆ 2021:
  - Commission adopts rulemaking to allow licensed Lottery courier services to purchase and deliver Lottery tickets to customers
  - Commission adopts mobile sports wagering regulations and related regulations governing in-person sports wagering at licensed commercial casinos.

## Commissioners

Commissioners are appointed by the Governor to serve a five-year unpaid term. One member is recommended for appointment by the Speaker of the Assembly and one member is recommended for appointment by the Temporary President of the Senate.

### Barry Sample



Barry Sample previously served as Deputy Director of State Operations where he handled the day-to-day management of state government following nearly two decades in service to New York State. In addition to his most recent experience, Mr. Sample served as Deputy Director at the New York State Division of Criminal Justice Services, Deputy Director at the New York State Division of Budget, and Director of Intergovernmental Affairs and Community Relations at the New York State Comptroller’s Office. Mr. Sample also taught at SUNY Albany, where he was involved in their Center on Minorities and their School of Criminal Justice.

Commissioner Sample (Governor appointment) was confirmed by the Senate on June 19, 2013.



**John A. Crotty**



John A. Crotty is a founding member of Workforce Housing Advisors, a New York City-based development firm with a particular focus on repositioning distressed multifamily properties as affordable housing. In total, Mr. Crotty has nearly two decades of experience in housing, government, and finance in a variety of capacities. Mr. Crotty is a former member of the Board of Directors of the New York City Off-Track Betting Corporation and was appointed by Governor Paterson to a panel to restructure the Off-Track Gaming system statewide. Mr. Crotty was also a member of the New York State Franchise Oversight Board, which oversees the finances of The New York Racing Association, Inc. Prior to founding Workforce Housing Advisors, Mr. Crotty was the Executive Director of JPMorganChase’s municipal housing finance group, which he started in 2007. He was the Executive Vice President of the New York City Housing Development Corporation from 2004 to 2007 and was Mayor Michael Bloomberg’s Director of City Legislative Affairs. Prior to joining the Bloomberg administration in 2002, he held a variety of financial management positions at MCI, PaineWebber, Winstar and Verizon from 1996 to 2002. Mr. Crotty is a Founding Member of Santa’s Angels, a not-for-profit organization that raises money and distributes gifts to the poor during the holiday season. He was a member of the Citizen’s Union Board of Directors. Mr. Crotty holds a MBA from Columbia Business School and a BA from the University of Rochester.

Commissioner Crotty (Governor appointment) was confirmed by the Senate on June 19, 2013.

**Peter J. Moschetti, Jr.**



Peter J. Moschetti, Jr. is a founding member of the firm of Anderson, Moschetti and Taffany. He served as a prosecutor in the Nassau County District Attorney’s Office from 1984 to 1987. Since then, Moschetti has focused on the trial of personal injury and wrongful death cases, including products liability and medical malpractice actions. He represents individuals and corporations in both state and federal courts and has been appointed as a special prosecutor in a number of high-profile criminal cases in the region. He also served as a member of the New York State Temporary Commission on Lobbying, a precursor of the Joint Commission on Public Integrity. Moschetti has been named one of the top 25 lawyers in the Hudson Valley by New York Super Lawyers Magazine every year since 2007 and has received the highest possible rating by Martindale Hubbell for both legal ability and ethical standards. He has lectured for continuing legal education in the areas of civil and criminal law and has taught at Albany Law School. Moschetti was graduated with honors from both the University of New Haven in Connecticut in 1981 and Albany Law School in 1984.

Commissioner Moschetti (Governor appointment) was confirmed by the Senate on May 14, 2014.

**John J. Poklemba**



John J. Poklemba serves as General Counsel to American Transit Insurance Company, a New York City-based Commercial Automobile Insurer. Previously, Mr. Poklemba was the managing partner of his general practice in Saratoga County for more than a decade. Prior to that, Mr. Poklemba was principal attorney responsible for governmental relations and litigation for Bartlett, Pontiff, Stewart & Rhodes, P.C. in Glens Falls. Mr. Poklemba served as New York State Director of Criminal Justice and Commissioner of the New York State Division of Criminal Justice Services from 1987 to 1991. He also served as Counsel to the agency from 1984 to 1987. Prior to his work in New York’s Criminal Justice division, Mr. Poklemba worked as a Chief Appellate Law Assistant to the New York State Appellate Division, Fourth Department in Rochester, Deputy Counsel for the New York State Office of Court Administration in Albany, Law Secretary to the Hon. Robert J. Sise in the New York Court of Claims in Albany and as a Trial Preparation Assistant for the Office of the District Attorney in the Bronx. Mr. Poklemba began his law career

as a litigation assistant for Dewey, Ballantine, Bushby, Palmer and Wood in New York City in 1972 and worked as a senior auditor for Travelers Insurance Company. Mr. Poklemba has been published several times in various legal journals. He received a B.A. in Economics from Boston College and graduated from St. John’s School of Law.

Commissioner Poklemba (Governor appointment) was re-confirmed by the Senate on June 22, 2015.

**Jerry Skurnik**



Jerry Skurnik has lived in New York City his entire life. He is currently a partner in Engage Voters US, the successor firm of Prime New York, a political consulting firm he established in 1988. The firm primarily supplies data for campaigns on local, state and national levels. He first became active in politics in 1966 when he worked as a volunteer for Ted Weiss’ Congressional campaign and worked in numerous political campaigns since then. He served eight years as a mayoral advisor, mainly as liaison to elected officials and community groups for New York City Mayor Ed Koch. More significantly to the responsibilities of the Commission, Jerry served as a member of the Task Force on the Future of Off-Track Betting in New York State.

Commissioner Skurnik (Assembly appointment) was confirmed by the Senate on June 21, 2017.

## Division of Charitable Gaming

The Division of Charitable Gaming investigates, audits, and monitors the sale of bell jar tickets sold annually across the 62 counties that comprise New York State. Division employees also verify the lawful disbursement of bell jar, bingo, Las Vegas night, and raffle proceeds by licensed organizations.

Program	Amount Wagered in 2021	Profit to Charities in 2021
Bell Jar	\$258,246,352.05	\$38,119,802.90
Bingo	\$79,021,630.00	\$11,866,910.47
Las Vegas Nights	\$891,674.00	\$458,188.34
Raffles	\$9,376,511.00	\$3,765,856.27
<b>Total</b>	<b>\$347,536,167.05</b>	<b>\$54,210,757.98</b>

### Bell Jar Proceeds by County

Name	Deals*	Handle**	Net Profit***
Albany	2759	\$7,340,618.50	\$1,503,058.76
Allegany	2808	\$8,340,057.00	\$1,030,716.64
Bronx	0	\$0.00	\$0.00
Broome	1308	\$4,115,377.00	\$359,875.53
Cattaraugus	9004	\$14,136,659.00	\$1,823,872.72
Cayuga	1171	\$3,035,596.00	\$526,455.62
Chautauqua	12428	\$24,527,106.50	\$3,166,589.03
Chemung	2116	\$3,696,759.00	\$636,382.58
Chenango	16858	\$535,828.00	\$89,930.89
Clinton	1430	\$4,886,024.50	\$799,238.10
Columbia	33	\$121,441.00	\$22,193.12
Cortland	549	\$1,795,774.00	\$229,098.80
Delaware	433	\$1,471,736.50	\$207,541.20
Dutchess	437	\$1,457,818.50	\$296,580.57
Erie	6028	\$14,239,264.75	\$2,300,953.09
Essex	559	\$1,519,878.00	\$236,919.78
Franklin	1314	\$3,049,433.25	\$298,783.94
Fulton	1052	\$3,417,083.00	\$431,636.06
Genesee	370	\$594,556.00	\$107,428.47
Greene	21	\$55,240.00	\$11,456.00
Hamilton	0	\$0.00	\$0.00
Herkimer	1721	\$5,823,266.92	\$673,786.45
Jefferson	57181	\$15,465,830.50	\$2,109,061.55
Kings	17	\$10,198.75	\$2,792.74
Lewis	2986	\$5,504,131.50	\$744,639.02
Livingston	1453	\$2,182,631.75	\$322,878.63
Madison	742	\$2,467,732.50	\$443,568.73
Monroe	4636	\$6,093,016.25	\$1,354,237.51
Montgomery	783	\$2,413,948.00	\$340,294.87

Name	Deals*	Handle**	Net Profit***
Nassau	106	\$371,233.00	\$81,479.98
New York	0	\$0.00	\$0.00
Niagara	2293	\$6,250,740.25	\$959,331.69
Oneida	6822	\$17,978,724.54	\$2,453,321.63
Onondaga	2413	\$3,718,108.50	\$722,553.15
Ontario	2904	\$6,247,157.00	\$951,981.01
Orange	395	\$1,231,591.00	\$318,086.76
Orleans	1862	\$3,869,211.50	\$301,131.59
Oswego	1559	\$4,105,461.50	\$776,280.78
Otsego	746	\$2,268,560.00	\$307,853.65
Putnam	50	\$174,924.00	\$34,651.58
Queens	12	\$21,820.00	\$4,833.67
Rensselaer	1155	\$3,517,828.00	\$543,089.70
Richmond	4	\$9,096.00	\$2,091.00
Rockland	355	\$979,701.00	\$218,307.06
Saratoga	76246	\$5,726,272.00	\$841,527.01
Schenectady	554	\$2,097,080.75	\$364,066.55
Schoharie	258	\$612,619.00	\$94,749.94
Schuyler	1601	\$2,020,499.00	\$318,048.27
Seneca	1316	\$3,630,112.00	\$545,032.54
St. Lawrence	4685	\$13,498,902.00	\$1,927,454.41
Steuben	8496	\$18,324,932.75	\$2,696,616.95
Suffolk	497	\$1,393,518.00	\$243,646.19
Sullivan	26	\$57,255.00	\$11,788.74
Tioga	271	\$849,187.50	\$116,118.89
Tompkins	645	\$1,966,512.50	\$276,710.09
Ulster	232	\$693,756.00	\$148,913.22
Warren	785	\$2,449,249.09	\$369,895.41
Washington	752	\$2,432,530.50	\$403,551.46
Wayne	2637	\$5,439,213.50	\$751,181.96
Westchester	489	\$1,439,484.00	\$262,854.96
Wyoming	868	\$2,018,121.50	\$345,443.97
Yates	1964	\$4,555,944.00	\$657,238.69
<b>TOTAL</b>	<b>253195</b>	<b>\$258,246,352.05</b>	<b>\$38,119,802.90</b>

\*Deals: The number of bell jar games that are reported sold by a licensed authorized organization.

\*\*Handle: The gross profit to the organizations from the sale of bell jar tickets prior to deducting prizes, the value of their unsold bell jar tickets and the cost of bell jar deals.

\*\*\*Net Profit: The total amount realized by the organization from the sale of bell jar tickets.

The Division also considers applications for license for qualified bingo and games of chance manufacturers and suppliers, and monitors licenses issued by municipalities; collects and assists municipalities in the collection of license fees from game operators; determines that commercial bingo hall rental fees are fair and reasonable as a prerequisite to licensure by municipalities; approves bell jar ticket games; considers bingo and games of chance identification numbers for applicant organizations as a prerequisite to their licensing by municipalities; conducts compliance training for bingo and games of chance licensees; and investigates and resolves complaints to ensure the operational integrity of charitable games statewide.

**Identification Numbers Issued by the Commission**

Games of Chance	19
Bingo	3

**Bell Jar Ticket Approval**

Games Submitted & Reviewed	2,796
Games Approved	2,796
Games Denied	0

**Suppliers**

**Games of Chance**

Games of Chance Supplier Licenses Issued	35
Games of Chance License Fees to Commission	\$255,530.98
Gross Sales of Bell Jar, Las Vegas Night & Raffle Supplies & Equipment	\$12,776,594.17

**Bingo**

Bingo Supplier Licenses Issued	24
Bingo License Fees to Commission	\$7,380.00
Gross Sales of Bingo Supplies & Equipment	\$1,515,043.83
Bingo Hall - Rent Determinations	7

**Enforcement**

Complaints	112
Inspections	34
Investigations	123
Meetings	117
Training Seminars	5

**License Issued by Municipal Clerks\***

Bell Jar	1717
Bingo	39589
Las Vegas Nights	731
Raffles	454

**License Fees Collected by Municipal Clerks**

Bell Jar	\$42,925.00
Bingo	\$742,293.75
Las Vegas Nights	\$18,275.00
Raffles	\$3,180.00

**Additional License Fees Collected by Municipal Clerks & Commission**

Bell Jar (Commission)	\$1,940,564.39
Bingo (Municipality)	\$437,189.46
Las Vegas Nights (Municipality)	\$5,088.32
Raffles (Municipality)	\$44,606.16

\* There are 1,528 municipal clerks required to annually report charitable gaming licensing activity to the Commission. The figures reflected are compiled from reports filed by municipal clerks who have complied with the mandatory reporting requirements.

## Division of Gaming

### Indian Gaming

Class III gaming compacts exist between the State of New York and the Oneida Indian Nation of New York, the Saint Regis Mohawk Tribe and the Seneca Nation of Indians.

Compact Partner	Casino	Location
Oneida Indian Nation	Turning Stone	Verona
	Yellow Brick Road	Chittenango
	Point Place	Bridgeport
St. Regis Mohawk Tribe	Akwesasne Mohawk Casino	Hogansburg
Seneca Nation of Indians	Seneca Niagara Casino	Niagara Falls
	Seneca Allegany Casino	Salamanca
	Seneca Buffalo Creek	Buffalo

These compacts guarantee the State specific regulatory or oversight authority with respect to Class III gaming operations and establish the State’s three regulatory goals: ensure public order and safety; protect the integrity of the games authorized by the compacts; and gain mutual agreement on a sound system of fiscal and auditing controls over casino gaming operations.

Each compact and its appendices contain standards and specifications for all authorized games played at a Tribe or Nation’s Class III facilities along with the rules and internal controls governing the operation of the gaming facility, procedures for certification and/or registration of gaming employees and companies transacting business with the facility, and a system for mediation of disputes.

The Division maintains a presence within each Indian-operated facility to ensure that gaming operations, such as dealing procedures, internal accounting, and other controls, strictly conform to the applicable provisions of the relevant compact and its appendices. The Division’s on-site Inspectors are experienced, professional investigators who monitor the gaming activities with Nation or Tribal gaming inspectors, security officers, and surveillance departments. Casino patrons may seek Commission inspectors to clarify rules of a game and for recourse after filing a complaint.

Each compact requires individuals seeking employment and enterprises desiring to conduct business with a Class III gaming facility to undergo a thorough registration and licensing process. Each business applicant and their principal officers and employees must be fingerprinted and undergo a background review. The State’s regulatory expenses, for both personnel and equipment, are paid for or reimbursed by the applicable Indian Nation or Tribe.

## Commercial Gaming

The Division of Gaming regulates four commercial casinos.

In 2021, it is estimated that these four commercial properties collectively received a combined 6,077,957 visitors to their destination resort locations.

To ensure that operations within each commercial casino is conducted with the highest integrity, credibility and quality, Division staff are present at each of the properties. These teams are charged with executing various audits to ensure regulatory compliance across all operations, including but not limited to: cage; drop; soft count; surveillance; table games; poker; sports wagering; underage gaming prevention; floor plan changes; internal controls; surveillance; and operating, policy and procedure amendments.

In 2021, the teams performed a total of 793 audits resulting in 274 documented violations. As of January 1, 2022, the four commercial properties collectively had 5,216 slot assets on their floors, 280 live table games, and 51 live poker games.

Changes to the number, theme and/or type of devices on the gaming floor at a property require a formal submission from an authorized game developer to the Commission. Commercial staff research the proposed change(s) and, if approved, place the new devices on the gaming floor for beta testing for up to 270 days, after which the game developer can expect its device to be accepted or denied permanent status. To date, game reorganizations have occurred at each of the four commercial properties in keeping with each facility's license level.



Opened Dec 1, 2016



Opened Jan 31, 2017



Opened Feb 6, 2017



Opened Feb 5, 2018

**Gross Gaming Revenue (GGR):**

**Slot/ETGs:**

Credits Played	\$1,092,536,839	\$1,466,632,944	\$1,467,092,038	\$1,646,221,621
Promotional Slot Gaming	\$11,756,978	\$18,728,316	\$6,461,205	\$26,921,904
<b>Credits</b>				
Credits Won	\$1,001,068,605	\$1,332,640,884	\$1,331,957,244	\$1,495,268,827
Slot & ETG GGR	\$79,711,256	\$115,263,744	\$128,673,589	\$124,030,891
Avg Daily Slots & ETG's	726	1,381	984	1,555
Win/Unit per Day	\$302	\$229	\$358	\$219

**Table Games:**

Avg Daily Tables	24	48	62	73
Table Game Drop	\$49,944,264	\$132,588,888	\$182,945,608	\$423,460,158
Promotional Table Game Credits	\$1,297,745	\$0	\$877,405	\$2,318,685
Table Game GGR	\$8,876,632	\$26,182,373	\$36,556,773	\$77,420,431

**Poker Tables:**

Avg Daily Poker Tables	6	14	16	13
Poker Table GGR	\$205,927	\$1,199,306	\$1,584,582	\$2,652,758

**Sports Wagering:**

Sports Wagering Handle	\$14,622,509	\$58,728,238	\$88,602,187	\$35,361,489
Sports Wagering GGR	\$1,938,416	\$7,724,982	\$10,168,691	\$3,489,059
<b>Total GGR</b>	<b>\$90,732,231</b>	<b>\$150,370,406</b>	<b>\$176,983,635</b>	<b>\$207,593,138</b>

**Gaming Tax:**

Slots/ETG Tax <sup>1</sup>	\$29,493,165	\$36,100,636	\$42,513,624	\$39,388,526
Table/Sports Betting Game Tax <sup>2</sup>	\$1,102,098	\$3,510,666	\$4,831,005	\$8,356,225
<b>Total Gaming Tax</b>	<b>\$30,595,262</b>	<b>\$39,611,302</b>	<b>\$47,344,629</b>	<b>\$47,744,751</b>
Unclaimed Funds <sup>6</sup>	\$83,908	\$260,576	\$488,075	\$123,668
Miscellaneous Adjustments <sup>7</sup>	\$6,550	\$35,000	\$10,321	\$42,200
<b>Total Revenue Allocable</b>	<b>\$30,685,720</b>	<b>\$39,906,878</b>	<b>\$47,843,025</b>	<b>\$47,910,619</b>

**Statutory Allocation of Gaming Tax:**

Education/Property Tax Relief (80%)	\$24,548,576	\$31,925,502	\$38,274,420	\$38,328,495
Host County (5%) <sup>3</sup>	\$1,534,286	\$1,995,344	\$2,392,151	\$2,395,531
Host Municipality (5%) <sup>4</sup>	\$1,534,286	\$1,995,344	\$2,392,151	\$2,395,531
Non-host Counties within Region (10%) <sup>5</sup>	\$3,068,572	\$3,990,688	\$4,784,302	\$4,791,062

<b>Net Revenue to Operator</b>	<b>\$60,136,969</b>	<b>\$110,759,104</b>	<b>\$129,639,007</b>	<b>\$159,848,387</b>
<sup>1, 8</sup> Slot/ETG tax rate varies by region.	37%	37%, 30%	45%, 30%	39%, 30%
<sup>2</sup> Table/Sports Betting game tax rate.	10%	10%	10%	10%
<sup>3</sup> Host county	Tioga	Seneca	Schenectady	Sullivan
<sup>4</sup> Host Municipality	Town of Nichols	Town of Tyre	City of Schenectady	Town of Thompson

<sup>5</sup> Non-host counties within each region share 10% of the gaming tax on a per capita basis. For a listing of counties within each region and how much they receive, see the monthly commercial gaming reports on the NYS Gaming Commission website at: <https://www.gaming.ny.gov/gaming/index.php?ID=1>

<sup>6</sup> Unclaimed Funds are distributed in accordance with Racing, Pari-Mutuel Wagering and Breeding Law § 1345.

<sup>7</sup> Miscellaneous Adjustments comprise audit adjustments to gross gaming revenue, fines, and penalties, and are shown net of tax.

<sup>8</sup> Part OOO of Chapter 59 of the Laws of 2021 allowed commercial gaming facilities to petition the Commission for a temporary reduction of the slot tax rate. As of April 1, 2021, del Lago, Rivers, and Resorts World Catskills slot rate was reduced to 30%



## Video Lottery Gaming

Video lottery games, also known as Video lottery terminals (VLTs), are offered on approximately 18,406 video gaming machines spread over eight facilities – Saratoga Casino Hotel, Finger Lakes Gaming & Racetrack, Hamburg Gaming, Batavia Downs Gaming, Empire City Casino, Vernon Downs Casino, Resorts World New York City and Jake’s 58 Casino Hotel. The revenue generated from these games is considered part of the New York Lottery, with all proceeds going to Aid to Education.

	Saratoga Casino Hotel	Finger Lakes Gaming & Racetrack	Hamburg Gaming	Batavia Downs Gaming	Empire City Casino	Vernon Downs Casino	Jake's 58 Suffolk OTB	Nassau OTB	Resorts World Casino	Statewide
<i>CY 2021 Net Win</i>										
Credits Played	\$1,830,293,307	\$1,583,375,310	\$822,541,535	\$913,409,150	\$9,170,234,549	\$343,034,996	\$3,898,480,760	\$9,357,070,179	\$8,302,443,712	\$36,220,883,497
Free Play Allowance	\$10,704,736	\$12,432,270	\$7,578,596	\$9,076,700	\$27,840,627	\$2,686,959	\$8,395,683	\$0	\$31,265,279	\$109,980,849
Credits Won	\$1,691,654,744	\$1,458,269,331	\$755,189,144	\$837,932,025	\$8,542,619,264	\$314,619,289	\$3,654,673,515	\$9,105,562,353	\$7,663,328,476	\$34,023,848,138
Net Win	\$127,933,828	\$112,673,709	\$59,773,796	\$66,400,425	\$599,774,658	\$25,728,748	\$235,411,562	\$251,507,826	\$607,849,957	\$2,087,054,510
Avg Daily VGM's	1,011	943	727	696	3,801	378	845	1,000	4,609	14,010
Win/VGM/Day	\$347	\$327	\$225	\$261	\$432	\$187	\$763	\$689	\$361	\$399
<i>Statutory Allocation of Net Win</i>										
Education Contribution	\$59,489,230	\$52,393,275	\$20,323,091	\$25,896,166	\$302,886,203	\$8,747,774	\$105,935,203	\$113,178,522	\$243,139,983	\$931,989,445
Net Agent Commission <sup>4</sup>	\$42,857,832	\$37,745,693	\$27,495,946	\$27,224,174	\$176,933,524	\$11,835,224	\$94,164,625	\$100,603,130	\$206,668,985	\$725,529,134
Purses <sup>1</sup>	\$11,194,210	\$9,858,950	\$5,230,207	\$5,810,037	\$52,480,283	\$2,251,265	\$5,414,466	\$5,784,680	\$45,588,747	\$143,612,845
Breeding Fund	\$1,599,173	\$1,408,421	\$747,172	\$830,005	\$7,497,183	\$321,609	\$1,177,058	\$1,257,539	\$9,117,749	\$23,955,911
NYRA Operations							\$2,118,704	\$2,263,570	\$18,235,499	\$22,617,773
NYRA Capital Expenditures							\$3,060,350	\$3,269,602	\$24,313,998	\$30,643,950
Gaming Floor & Admin <sup>3</sup>	\$12,793,383	\$11,267,371	\$5,977,380	\$6,640,043	\$59,977,466	\$2,572,875	\$23,541,156	\$25,150,783	\$60,784,996	\$208,705,451
	\$127,933,828	\$112,673,709	\$59,773,796	\$66,400,425	\$599,774,658	\$25,728,748	\$235,411,562	\$251,507,826	\$607,849,957	\$2,087,054,510
<i>Local Assistance Funding <sup>2</sup></i>										
Eligible County	Saratoga \$775,198	Ontario \$591,174	Erie \$288,560	Genessee \$200,392	N/A \$0.00	Oneida \$256,796	N/A \$0.00	N/A \$0.00	N/A \$0.00	
Eligible City	Saratoga Springs \$2,325,592	N/A \$0.00	N/A \$0.00	Batavia \$440,789	Yonkers \$19,600,000	N/A \$0.00	N/A \$0.00	N/A \$0.00	N/A \$0.00	
Eligible Town	N/A \$0.00	Farmington \$1,777,573	Hamburg \$865,679	Batavia \$160,388	N/A \$0.00	Vernon \$231,788	N/A \$0.00	N/A \$0.00	N/A \$0.00	
Eligible Village	N/A \$0.00	N/A \$0.00	N/A \$0.00	N/A \$0.00	N/A \$0.00	Vernon \$137,103	N/A \$0.00	N/A \$0.00	N/A \$0.00	

<sup>1</sup> NYS Tax Law allows facility operators and horsemen organizations to negotiate purse rates. 1% of gross purse contributions from VLT proceeds are refunded to the Gaming Commission for equine health & safety programs.

<sup>2</sup> Eligible municipalities hosting a video lottery gaming facility receive local assistance funding per State Finance Law, Section 54-L.

<sup>3</sup> Chapter 61 of the Laws of 2017 allows Vernon Downs to retain up to 75% of the administration allocation as determined by the Commission. The amount for 2021 is \$1,142,052 and is not included in "Gaming Floor & Admin" above.

<sup>4</sup> Agent Commissions do not reflect "additional commissions" paid to Saratoga, Finger Lakes, and Vernon Downs pursuant to Section 1612 of the tax Law. Additional commission amounts for 2021 were \$5,286,359, \$5,063,549, and \$640,219 respectively.



## Interactive Fantasy Sports

Interactive Fantasy Sports are skill-based contests in which the participants assemble a roster of athletes in a given sport and use the actual aggregated performance statistics of those athletes to determine the contest's winner. Individuals pay fees to enter the contest and, if successful, win prizes. Article 14 gives the Commission the authority to establish consumer fraud and abuse protections and safeguards for both players and operators.

Interactive Fantasy Sports operators seeking to do business in New York State must register with the Gaming Commission and pay a tax equivalent to 15 percent of their interactive fantasy sports gross revenue generated within the state. In addition, registered operators shall pay a tax equal to ½ of 1 percent, but not to exceed \$50,000 annually. All taxes collected from operators, as well as interest and penalties (as applicable) imposed by the Gaming Commission, are deposited, on a monthly basis, directly in the New York Lottery fund for the sole purpose of supporting New York's public K-12 schools.

### Calculation of NYS Resident Percentage:

Total entry fees from NYS locations	\$437,042,343
Total entry fees from all players	\$5,224,114,679
NYS resident percentage	8.4%

### Gross Revenue:

Total entry fees from all players	\$5,224,114,679
Total winnings paid out to all players	\$4,666,772,809
Gross revenue	\$557,342,356
Gross revenue after NYS resident percentage (subject to tax)	\$46,613,909

### Tax & Other Adjustments:

Tax on NYS gross revenue <sup>1</sup>	\$7,041,293
NYS additional tax <sup>2</sup>	\$115,323
Total monthly and additional tax	\$7,156,615
Forfeited prizes	\$363
Adjustments (errors, penalty, interest, audit)	\$0
Total tax and other adjustments	\$7,156,978

### New York Player Account Information:

Number of registrants reporting	13
Number of accounts held by authorized players	380,532
Number of accounts held by highly experienced players	68,139
Number of new accounts established in the preceding year	72,872
Number of accounts permanently closed in the preceding year	3,494
Total players who requested to exclude themselves from contests	445

1. Gross revenue totals represent entry fees from all players less winnings paid out to players. In the event that a registrant reports negative gross revenue (winnings paid out exceed entry fees collected) the monthly tax is zero. Positive monthly gross revenue is taxed at 15%.

2. The NYS Additional Tax of 0.5% has an annual cap of \$50,000 per registrant for the State Fiscal Year.

3. Data is shown in aggregate for all 13 registrants

4. All figures reported by the registrants are unaudited and subject to change.

## Division of Horse Racing and Pari-Mutuel Wagering

New York State features racing at four Thoroughbred tracks and seven harness tracks.

Thoroughbred Tracks	Harness Tracks	
Aqueduct Racetrack (NYRA)	Batavia Downs	Tioga Downs
Belmont Park (NYRA)	Buffalo Raceway	Vernon Downs
Finger Lakes Racetrack	Monticello Raceway	Yonkers Raceway
Saratoga Race Course (NYRA)	Saratoga Raceway	

While bettors may wager on-track, they may also wager on races remotely through any of the State’s five off-track betting corporations or through licensed multi-jurisdictional account wagering providers.



The tracks and off-track betting corporations both feature simulcasting of races taking place within and beyond New York’s borders. Additionally, the following companies offer advance deposit wagering (ADW):

AmWest Entertainment LLC  
Churchill Downs Technology Initiatives Company  
Day at the Track  
Game Play dba b spot  
Lien Games Racing, LLC

ODS Technologies, L.P. d/b/a TVG Network  
Penn ADW  
Player Management Group LLC  
WatchandWager  
Xpressbet, LLC

### Officiating and Integrity

Each race conducted at a Thoroughbred racetrack is observed by three stewards employed by the Commission, the racing association, and The Jockey Club. At the harness tracks, each race is observed by three judges who are all Commission employees. The stewards’ and judges’ viewing stands are located near the finish line of each racetrack and are equipped with several monitors to permit the viewing of multiple angles of each race. The stewards and judges observe the races to ensure that all conduct complies with the rules and regulations.

Preparation to become a steward or presiding judge includes coursework and testing. Examples of the testing and preparation are:

- ◆ All presiding and associate judges and starters must be licensed by the United States Trotting Association (USTA) before being hired. A test must be passed to obtain each license.
- ◆ All full-time stewards must attend the Louisville Equine Steward Certification Class. They must also attend periodic seminars in order to keep their licenses valid.

- ◆ All current judges are retested periodically on the rules, equipment, medications and procedures and the training tests are updated frequently.
- ◆ New officials receive extensive on-the-job training at their new positions before being hired full-time.

## Regulatory Activities

During calendar year 2021, the Division imposed 611 sanctions for violations of racing laws, rules and regulations at both harness and Thoroughbred tracks. The rulings include driving and riding infractions, general conduct violations, human and equine drug violations, and general business practice violations. The Division also issued 68 violations that were not assigned to a specific track (ie Head office). Overall, fines levied in 2021 totaled \$102,749.

## Racing Licensing

Participants in New York State racing are required to obtain an occupational license. The character and integrity of all participants are important to the continuity of the sport. A substantial number of license applications are reviewed, updated and processed carefully by the Division licensing bureau before a license is issued. Also, by statute, fingerprinting is required of each applicant.

Where it is believed that an applicant's background or licensee's conduct may warrant a finding that their participation in racing would be inconsistent with the public interest or the best interest of racing generally, a thorough investigation is conducted before action is taken. Licenses are suspended or revoked where warranted.

See Page 30 for information on the number and type of licenses issued by the Division.

## Racing Handle

The Commission regulates all horse racing and pari-mutuel wagering at the State's four Thoroughbred tracks and seven harness tracks. The Gaming Commission oversees operations at the state's five off-track betting corporations as well as the simulcasting of races within New York State and beyond.

### 2021 Total Handle on Races Run in New York On-Track, Off-Track and Out-of-State Guest

	NYRA	Finger Lakes	Batavia	Buffalo	Monticello	Saratoga Harness	Tioga	Vernon	Yonkers	TOTAL
<b>ON-TRACK LIVE</b>	\$ 266,978,633	\$ 1,826,902	\$ 945,105	\$ 263,456	\$ 904,571	\$ 2,493,110	\$ 686,480	\$ 1,149,948	\$ 4,112,172	\$ 279,360,377
<b>SIMULCAST IMPORTS:</b>										
Imported to NYS Tracks:										
NYRA		\$ 3,387,127	\$ 301,624	\$ 354,449	\$ 1,450,021	\$ 1,240,340	\$ 195,003	\$ 243,233	\$ 5,694,004	\$ 12,865,801
Finger Lakes	1,315,082		18,224	8,408	129,887	65,425	8,451	4,378	40,025	1,589,880
Batavia	263,930	15,370		24,200	27,114	11,121	5,305	4,555	21,537	373,132
Buffalo	297,137	13,948			10,763	4,835	6,856	7,290	1,841	342,670
Monticello	-	-	-	-		11,907	-	-	-	11,907
Saratoga	9,343,334	388,187	29,002	30,169	535,792		43,113	80,617	544,399	10,994,613
Tioga	388,766	41,187	6,586	3,428	32,480	26,062		17,551	23,170	539,230
Vernon	607,064	52,513	10,703	6,583	108,576	85,907	41,285		35,524	948,155
Yonkers	8,982,165	134,438	74,131	49,046	436,897	181,547	30,357	37,444		9,926,025
<b>TOTAL TO NYS TRACKS</b>	\$ 21,197,478	\$ 4,032,770	\$ 440,270	\$ 476,283	\$ 2,731,530	\$ 1,627,144	\$ 330,370	\$ 395,068	\$ 6,360,500	\$ 37,591,413
<b>IMPORTED TO NYS OTB'S</b>										
Capital	\$ 43,150,141	\$ 1,370,027	\$ 131,446	\$ 124,971	\$ 959,814	\$ 1,295,339	\$ 56,046	\$ 190,336	\$ 1,172,198	\$ 48,450,318
Catskill	1,361,387	60,780	6,396	4,725	120,003	30,846	9,262	8,021	238,671	1,840,091
Nassau	41,844,270	1,540,063	61,878	58,554	1,530,236	637,692	47,056	60,666	1,135,955	46,916,370
Suffolk	23,309,892	692,835	56,232	73,045	672,343	244,856	22,412	43,085	727,790	25,842,490
Western	11,378,312	1,791,091	850,095	856,931	1,300,815	798,732	79,539	167,384	1,202,295	18,425,194
<b>TOTAL TO NYS OTB'S</b>	\$ 121,044,002	\$ 5,454,796	\$ 1,106,047	\$ 1,118,226	\$ 4,583,211	\$ 3,007,465	\$ 214,315	\$ 469,492	\$ 4,476,909	\$ 141,474,463
<b>EXPORTED OUT OF STATE</b>	\$ 1,964,550,121	\$ 75,786,239	\$ 5,592,890	\$ 8,576,612	\$ 67,780,343	\$ 38,752,101	\$ 4,711,339	\$ 4,804,718	\$ 118,411,552	\$ 2,288,965,915
<b>TOTAL HANDLE ON NYS RACING</b>	\$ 2,373,770,234	\$ 87,100,707	\$ 8,084,312	\$ 10,434,577	\$ 75,999,655	\$ 45,879,820	\$ 5,942,504	\$ 6,819,226	\$ 133,361,133	\$ 2,747,392,168

## 2021 Total Betting at New York State Race Tracks

### On-Track Betting on Live and Simulcast Import of All Races

	2021			2020		
	Simulcast Imports	Live Racing	On-Track Betting	Simulcast Imports	Live Racing	On-Track Betting
<b>RECEIVING TRACK:</b>						
<b>THOROUGHBRED:</b>						
Aqueduct	\$ 128,360,125	\$ 49,405,263	\$ 177,765,388	\$ 136,490,922	\$ 38,997,702	\$ 175,488,624
Belmont	126,045,395	79,807,488	205,852,883	121,696,127	48,732,065	170,428,192
Saratoga	42,056,996	137,765,882	179,822,878	49,652,944	64,384,833	114,037,777
NYRA*	<u>\$ 296,462,516</u>	<u>\$ 266,978,633</u>	<u>\$ 563,441,149</u>	<u>\$ 307,839,993</u>	<u>\$ 152,114,600</u>	<u>\$ 459,954,593</u>
Finger Lakes	5,100,224	1,826,902	6,927,126	2,878,913	39,669	2,918,582
<b>THOROUGHBRED TRACKS</b>	<b>\$ 301,562,740</b>	<b>\$ 268,805,535</b>	<b>\$ 570,368,275</b>	<b>\$ 310,718,906</b>	<b>\$ 152,154,269</b>	<b>\$ 462,873,175</b>
<b>HARNESS:</b>						
Batavia	\$ 1,441,377	\$ 945,105	\$ 2,386,482	\$ 498,125	\$ 105,495	\$ 603,620
Buffalo	1,044,449	263,456	1,307,905	800,796	191,147	991,943
Monticello	45,517	904,571	950,088	435,930	219,755	655,685
Saratoga	33,151,000	2,493,110	35,644,110	27,445,272	915,727	28,360,999
Tioga	1,819,764	686,480	2,506,244	608,791	41,507	650,298
Vernon	2,796,248	1,149,948	3,946,196	905,600	-	905,600
Yonkers	34,432,729	4,112,172	38,544,901	22,887,832	2,297,964	25,185,796
<b>HARNESS TRACKS</b>	<b>\$ 74,731,084</b>	<b>\$ 10,554,842</b>	<b>\$ 85,285,926</b>	<b>\$ 53,582,346</b>	<b>\$ 3,771,595</b>	<b>\$ 57,353,941</b>
<b>ALL TRACKS</b>	<b>\$ 376,293,824</b>	<b>\$ 279,360,377</b>	<b>\$ 655,654,201</b>	<b>\$ 364,301,252</b>	<b>\$ 155,925,864</b>	<b>\$ 520,227,116</b>

\* Simulcast Imports for NYRA tracks includes \$0 of inter-track simulcasting of NYRA racing to other NYRA tracks for 2021 and \$0 for 2020.

## 2021 Total Betting at New York State Race Tracks

### On-Track Betting By Breed and Location of Race

	Betting at NYS Thoroughbred Tracks	Percent of Total Thoroughbred	Betting at NYS Harness Tracks	Percent of Total Harness	Total	Percent of Total
<b>SUMMARY OF ON-TRACK BETTING</b>						
<b>LIVE RACING:</b>						
NYRA	\$ 266,978,633	46.8%	\$ -	0.0%	\$ 266,978,633	40.7%
Finger Lakes	1,826,902	0.3%	-	0.0%	1,826,902	0.3%
NYS Harness Tracks	-	0.0%	10,554,842	12.4%	10,554,842	1.6%
All Live Racing at NYS Tracks	<u>\$ 268,805,535</u>	<u>47.1%</u>	<u>\$ 10,554,842</u>	<u>12.4%</u>	<u>\$ 279,360,377</u>	<u>42.6%</u>
<b>IN-STATE SIMULCASTING BETWEEN NYS TRACKS:</b>						
NYRA	\$ 1,315,083	0.1%	\$ 19,882,394	23.3%	\$ 21,197,477	3.2%
Finger Lakes	3,387,127	0.6%	645,643	0.8%	4,032,770	0.6%
NYS Harness Tracks	9,753,470	1.7%	2,607,695	3.1%	12,361,165	1.9%
All Simulcasts from NYS Tracks	<u>\$ 14,455,680</u>	<u>2.5%</u>	<u>\$ 23,135,732</u>	<u>27.2%</u>	<u>\$ 37,591,412</u>	<u>5.7%</u>
<b>WAGERING ON NYS RACING AT NYS TRACKS</b>	<b>\$ 283,261,215</b>	<b>49.7%</b>	<b>\$ 33,690,574</b>	<b>39.6%</b>	<b>\$ 316,951,789</b>	<b>48.3%</b>
<b>WAGERING ON OUT OF STATE RACES AT NYS TRACKS:</b>						
Thoroughbred Races	\$ 287,107,060	50.3%	\$ 37,720,955	44.2%	\$ 324,828,015	49.5%
Harness Races	-	0.0%	13,874,397	16.3%	13,874,397	2.1%
All Simulcasts from Out-of-State Tracks	<u>\$ 287,107,060</u>	<u>50.3%</u>	<u>\$ 51,595,352</u>	<u>60.5%</u>	<u>\$ 338,702,412</u>	<u>51.6%</u>
<b>TOTAL BETTING AT NYS TRACKS FROM ALL SOURCES</b>	<b>\$ 570,368,275</b>	<b>100.0%</b>	<b>\$ 85,285,926</b>	<b>100.1%</b>	<b>\$ 655,654,201</b>	<b>99.9%</b>

## 2021 Thoroughbred Tracks, Harness Tracks, and OTBs

### Thoroughbred Tracks

Aqueduct Racetrack	Live Handle	Simulcast Import Handle	Total Facility Handle	Race Dates	Attendance
	\$49,405,263	\$128,360,125	\$177,765,388	82	55,349
Belmont Park	Live Handle	Simulcast Import Handle	Total Facility Handle	Race Dates	Attendance
	\$79,807,488	\$126,045,395	\$205,852,883	79	143,835
Saratoga Race Course	Live Handle	Simulcast Import Handle	Total Facility Handle	Race Dates	Attendance
	\$137,765,882	\$42,056,996	\$179,822,878	40	1,046,478
Finger Lakes Racetrack	Live Handle	Simulcast Import Handle	Total Facility Handle	Race Dates	Attendance*
	\$1,826,902	\$5,100,224	\$6,927,126	90	0

\*Attendance data not required for non-NYRA tracks.

### Harness Tracks

Batavia Downs	Live Handle	Simulcast Import Handle	Total Facility Handle	Race Dates
	\$945,105	\$1,441,377	\$2,386,482	56
Buffalo Raceway	Live Handle	Simulcast Import Handle	Total Facility Handle	Race Dates
	\$263,456	\$1,044,449	\$1,307,905	49
Monticello Raceway	Live Handle	Simulcast Import Handle	Total Facility Handle	Race Dates
	\$904,571	\$45,517	\$950,088	196
Saratoga Raceway	Live Handle	Simulcast Import Handle	Total Facility Handle	Race Dates
	\$2,493,110	\$33,151,000	\$35,644,110	129
Tioga Downs	Live Handle	Simulcast Import Handle	Total Facility Handle	Race Dates
	\$686,480	\$1,819,764	\$2,506,244	51
Vernon Downs	Live Handle	Simulcast Import Handle	Total Facility Handle	Race Dates
	\$1,149,948	\$2,796,248	\$3,946,196	59
Yonkers Raceway	Live Handle	Simulcast Import Handle	Total Facility Handle	Race Dates
	\$4,112,172	\$34,432,729	\$38,544,901	225
<b>TOTAL - ALL RACETRACKS</b>	Live Handle	Simulcast Import Handle	Total Facility Handle	Race Dates
	<b>\$279,360,377</b>	<b>\$376,293,824</b>	<b>\$655,654,201</b>	<b>1,056</b>

### OTBs

Capital OTB	In-State Handle	Out-of-State Handle	Total Handle
	\$48,450,318	\$86,519,284	\$134,969,602
Catskill OTB	In-State Handle	Out-of-State Handle	Total Handle
	\$1,840,091	\$5,243,066	\$7,083,157
Nassau OTB	In-State Handle	Out-of-State Handle	Total Handle
	\$46,916,370	\$89,822,876	\$136,739,246
Suffolk OTB	In-State Handle	Out-of-State Handle	Total Handle
	\$25,842,490	\$40,446,776	\$66,289,266
Western OTB	In-State Handle	Out-of-State Handle	Total Handle
	\$18,425,194	\$47,554,721	\$65,979,915
<b>TOTAL - ALL OTBs</b>	In-State Handle	Out-of-State Handle	Total Handle
	<b>\$141,474,463</b>	<b>\$269,586,723</b>	<b>\$411,061,186</b>

## 2021 Distribution of On-Track Betting

	NYRA	Finger Lakes	Batavia	Buffalo	Monticello	Saratoga	Tioga	Vernon	Yonkers	All NYS Tracks
Regular	\$ 202,422,394	\$ 2,179,397	\$ 816,042	\$ 415,814	\$ 147,608	\$ 10,129,259	\$ 778,497	\$ 1,014,823	\$ 11,090,999	\$ 228,994,833
Multiple	175,102,135	2,186,402	706,841	423,539	342,778	10,587,396	842,457	1,436,443	11,162,288	202,790,279
Exotic	185,916,620	2,561,327	850,544	465,344	459,702	14,105,657	885,290	1,494,930	16,291,614	223,031,028
Super Exotic	-	-	13,055	3,208	-	821,798	-	-	-	838,061
<b>Total Handle</b>	<b>\$ 563,441,149</b>	<b>\$ 6,927,126</b>	<b>\$ 2,386,482</b>	<b>\$ 1,307,905</b>	<b>\$ 950,088</b>	<b>\$ 35,644,110</b>	<b>\$ 2,506,244</b>	<b>\$ 3,946,196</b>	<b>\$ 38,544,901</b>	<b>\$ 655,654,201</b>
Takeout	\$ 109,595,814	\$ 1,410,956	\$ 489,935	\$ 263,601	\$ 208,574	\$ 7,098,234	\$ 494,781	\$ 809,820	\$ 7,874,326	\$ 128,246,041
Breakage	2,586,841	32,945	10,195	5,693	3,930	152,464	9,761	14,105	121,033	2,936,967
<b>Total Takeout and Breakage</b>	<b>\$ 112,182,655</b>	<b>\$ 1,443,901</b>	<b>\$ 500,130</b>	<b>\$ 269,294</b>	<b>\$ 212,504</b>	<b>\$ 7,250,698</b>	<b>\$ 504,542</b>	<b>\$ 823,925</b>	<b>\$ 7,995,359</b>	<b>\$ 131,183,008</b>
State Tax on Handle	\$ 6,178,580	\$ 91,899	\$ 21,064	\$ 15,556	\$ 5,112	\$ 469,913	\$ 32,115	\$ 53,556	\$ 426,635	\$ 7,294,430
State Regulatory Fee	3,380,647	41,563	14,319	7,848	5,701	213,866	15,037	23,677	231,269	3,933,927
State Tax on Breakage	963,485	14,515	4,455	2,343	2,118	61,972	4,341	6,630	58,366	1,118,225
<b>Total Tax and Regulatory Fee</b>	<b>\$ 10,522,712</b>	<b>\$ 147,977</b>	<b>\$ 39,838</b>	<b>\$ 25,747</b>	<b>\$ 12,931</b>	<b>\$ 745,751</b>	<b>\$ 51,493</b>	<b>\$ 83,863</b>	<b>\$ 716,270</b>	<b>\$ 12,346,582</b>
Racetrack Commission	\$ 96,922,280	\$ 1,241,484	\$ 435,939	\$ 231,576	\$ 188,260	\$ 6,195,515	\$ 427,182	\$ 699,619	\$ 6,959,640	\$ 113,301,495
Racetrack Breakage	1,623,356	18,430	5,740	3,349	1,812	90,491	5,420	7,474	62,667	1,818,739
<b>Total to Racetrack</b>	<b>\$ 98,545,636</b>	<b>\$ 1,259,914</b>	<b>\$ 441,679</b>	<b>\$ 234,925</b>	<b>\$ 190,072</b>	<b>\$ 6,286,006</b>	<b>\$ 432,602</b>	<b>\$ 707,093</b>	<b>\$ 7,022,307</b>	<b>\$ 115,120,234</b>
Horse Breeders Fund Share	\$ 3,114,307	\$ 36,010	\$ 18,613	\$ 8,622	\$ 9,501	\$ 218,940	\$ 20,447	\$ 32,967	\$ 256,782	3,716,189
<b>Racetrack Payouts</b>										
Paid to Simulcast Senders	\$ 16,555,108	\$ 280,695	\$ 69,024	\$ 64,823	\$ 1,366	\$ 2,075,145	\$ 95,760	\$ 142,515	\$ 1,861,202	\$ 21,145,638
Paid to NYRA and Finger Lakes			\$ 23,069	\$ 15,922	\$ -	\$ 492,697	\$ 30,750	\$ 39,300	\$ 420,787	\$ 1,022,524
Gross Purses Paid	\$ 158,793,576	\$ 14,482,246	\$ 4,728,380	\$ 3,829,390	\$ 8,299,278	\$ 14,344,709	\$ 4,482,400	\$ 4,596,200	\$ 56,220,444	\$ 269,776,623
Minus Pool	\$ 241,626	\$ 1,925	\$ 19,431	\$ 101	\$ 331	\$ 39,434	\$ 497	\$ 9,938	\$ 53,183	\$ 366,466
Uncashed Tickets	\$ 826,894	\$ 37,586	\$ 11,657	\$ 11,203	\$ 4,725	\$ 82,266	\$ 11,914	\$ 20,887	\$ 136,529	\$ 1,143,661
State Admission Taxes	\$ 228,994	N/A				N/A		\$ 244		\$ 229,238

Note: Handle includes on-track live racing and simulcast imports of all racing.

**NYS Regional Off-Track Betting Corporations  
2021 Distribution of Revenues**

	<u>Capital</u>	<u>Catskill</u>	<u>Nassau</u>	<u>Suffolk</u>	<u>Western</u>	<u>All Regions</u>
<b>Pari-Mutuel Revenue:</b>						
Statutory Take-Out	\$ 26,910,378	\$ 1,451,987	\$ 27,248,860	\$ 13,345,916	\$ 13,825,460	\$ 82,782,601
Breakage	570,141	29,389	601,232	253,347	220,898	1,675,007
Minus Pools	(25,249)	(477)	(72,834)	(2,803)	(14,919)	(116,282)
Missed Pools	-	-	-	1,085	-	1,085
Derived from Section 532.3.b.(iv) & 532.7	445,604	8,978	915,330	359,200	647,210	2,376,322
<b>Total Pari-Mutuel Revenue</b>	<b>\$ 27,900,874</b>	<b>\$ 1,489,877</b>	<b>\$ 28,692,588</b>	<b>\$ 13,956,745</b>	<b>\$ 14,678,649</b>	<b>\$ 86,718,733</b>
<b>Statutory &amp; Simulcast Payments</b>						
New York State ( Pari-Mutuel Tax & Breakage)	\$ 980,070	\$ 53,144	\$ 852,979	\$ 526,375	\$ 558,481	\$ 2,971,049
New York State Racing & Wagering Board Regulatory Fee	809,818	42,499	820,435	397,736	395,880	2,466,367
NYS Thoroughbred Development & Breeding Fund	589,325	29,885	680,258	324,503	277,858	1,901,830
Ag. & NYS Breeding & Dev. Fund Breeders' Fund - Harness	258,195	20,047	255,656	125,591	207,297	866,786
In State Thoroughbred Tracks	6,343,696	287,154	7,078,266	3,378,860	2,568,584	19,656,560
Out of State Thoroughbred Tracks	4,155,154	218,431	4,013,450	1,780,539	1,672,198	11,839,772
In State Harness Tracks	1,944,639	195,866	1,056,876	507,957	1,221,192	4,926,530
Out of State Harness Tracks	263,401	28,153	212,360	109,275	288,601	901,789
Special Events	275,546	16,081	286,439	200,400	244,241	1,022,706
<b>Total Statutory &amp; Simulcast Payments</b>	<b>\$ 15,619,844</b>	<b>\$ 891,260</b>	<b>\$ 15,256,719</b>	<b>\$ 7,351,236</b>	<b>\$ 7,434,332</b>	<b>\$ 46,553,391</b>
<b>Net Pari-Mutuel Revenue</b>	<b>\$ 12,281,030</b>	<b>\$ 598,617</b>	<b>\$ 13,435,869</b>	<b>\$ 6,605,508</b>	<b>\$ 7,244,317</b>	<b>\$ 40,165,342</b>
<b>Other Revenue</b>						
Admission Income & Tax	\$ 10,876	\$ -	\$ 23,673	\$ 41,405	\$ -	\$ 75,954
Lottery Income	94,399	-	19,432	23,298	104,139	241,268
Concession Income	26,998	-	-	-	39,289	66,287
Derived from Section 509-a(3)	440,000	-	-	-	-	440,000
Transfer from Section 509 Reserve Fund	-	-	-	-	-	-
Interest Income	17,943	-	12,332	2	445	30,722
Enterprise Fund - Net Revenue / (Loss)	(1,115,250)	-	-	(39,286,649)	9,643,631	(30,758,268)
Other Income	6,073,853	1,334,304	26,477,850	2,707,702	5,959,479	42,553,188
<b>Net Revenue from Operations</b>	<b>\$ 17,829,849</b>	<b>\$ 1,932,922</b>	<b>\$ 39,969,156</b>	<b>\$ (29,908,734)</b>	<b>\$ 22,991,300</b>	<b>\$ 52,814,493</b>
<b>Operating Expenses</b>						
Branch Expenses	\$ 8,356,268	\$ 510,649	\$ 16,642,535	\$ 5,770,296	\$ 7,311,673	\$ 38,591,421
General & Administrative Expenses	3,119,919	1,700,237	4,423,965	7,535,714	6,961,848	23,741,683
<b>Total Operating Expenses</b>	<b>\$ 11,476,187</b>	<b>\$ 2,210,886</b>	<b>\$ 21,066,500</b>	<b>\$ 13,306,010</b>	<b>\$ 14,273,521</b>	<b>\$ 62,333,104</b>
<b>Section 516 Net Revenues from Operations</b>	<b>\$ 6,353,662</b>	<b>\$ (277,965)</b>	<b>\$ 18,902,656</b>	<b>\$ (43,214,744)</b>	<b>\$ 8,717,779</b>	<b>\$ (9,518,612)</b>
Less: Section 509-a(ii) Contributions to Capital Acquisition Fund	\$ 1,070,697	\$ -	\$ 301,205	\$ 474,948	\$ 659,799	\$ 2,506,649
Section 509 Contributions to Reserve Fund	-	-	-	-	-	-
Section 527.6 Obligations	-	-	-	-	-	-
<b>Section 516 Net Revenue for Distribution</b>	<b>\$ 5,282,965</b>	<b>\$ (277,965)</b>	<b>\$ 18,601,451</b>	<b>\$ (43,689,693)</b>	<b>\$ 8,057,980</b>	<b>\$ (12,025,261)</b>

**NYS Regional Off-Track Betting Corporations**
**2021 Summary of Direct and Regional Payments to Tracks**

	<u>Capital</u>	<u>Catskill</u>	<u>Nassau</u>	<u>Suffolk</u>	<u>Western</u>	<u>All Regions</u>
<b>New York State Thoroughbred:</b>						
NYRA:						
Aqueduct	\$ 771,172	\$ 31,076	\$ 1,052,151	\$ 559,112	\$ 166,776	\$ 2,580,287
Belmont	964,764	42,179	1,257,173	715,307	213,945	3,193,368
Saratoga	1,126,758	31,595	951,675	453,756	157,055	2,720,838
Total NYRA Direct	<u>\$ 2,862,694</u>	<u>\$ 104,849</u>	<u>\$ 3,260,999</u>	<u>\$ 1,728,175</u>	<u>\$ 537,776</u>	<u>\$ 8,494,493</u>
NYRA Regional	2,841,700	147,960	3,076,701	1,344,702	1,442,508	8,853,571
Finger Lakes Direct	61,605	1,930	77,619	46,205	101,519	288,878
Finger Lakes Regional	577,697	32,415	662,947	259,779	486,782	2,019,620
<b>Total New York State Thoroughbred</b>	<b><u>\$ 6,343,696</u></b>	<b><u>\$ 287,154</u></b>	<b><u>\$ 7,078,266</u></b>	<b><u>\$ 3,378,861</u></b>	<b><u>\$ 2,568,585</u></b>	<b><u>\$ 19,656,562</u></b>
<b>New York State Harness:</b>						
Batavia Direct	\$ 3,397	\$ 123	\$ 1,079	\$ 1,063	\$ 47,697	\$ 53,359
Batavia Regional	-	-	-	-	392,618	392,618
Buffalo Direct	2,900	87	1,010	1,331	46,724	52,052
Buffalo Regional	-	-	-	-	513,947	513,947
Monticello Direct	25,159	6,353	88,915	38,340	34,848	193,615
Monticello Regional	-	81,631	505,243	253,056	-	839,930
Saratoga Direct	216,248	572	11,069	4,337	14,176	246,402
Saratoga Regional	1,277,708	-	-	-	-	1,277,708
Tioga Direct	1,512	416	2,558	1,247	1,860	7,593
Tioga Regional	-	7,957	76,334	38,633	-	122,924
Vernon Direct	8,663	134	998	790	5,372	15,957
Vernon Regional	380,151	102	-	-	131,123	511,376
Yonkers Direct	28,901	13,862	130,307	40,722	32,826	246,618
Yonkers Regional	-	84,628	239,363	128,437	-	452,428
<b>Total New York State Harness</b>	<b><u>\$ 1,944,639</u></b>	<b><u>\$ 195,865</u></b>	<b><u>\$ 1,056,876</u></b>	<b><u>\$ 507,956</u></b>	<b><u>\$ 1,221,191</u></b>	<b><u>\$ 4,926,527</u></b>
<b>Total Payments to New York State Tracks</b>	<b><u>\$ 8,288,335</u></b>	<b><u>\$ 483,019</u></b>	<b><u>\$ 8,135,142</u></b>	<b><u>\$ 3,886,817</u></b>	<b><u>\$ 3,789,776</u></b>	<b><u>\$ 24,583,089</u></b>
Out-of-State Thoroughbred	\$ 4,155,154	\$ 218,432	\$ 4,013,450	\$ 1,780,539	\$ 1,672,198	\$ 11,839,773
Out-of-State Harness	263,401	28,153	212,360	109,275	288,601	901,790
<b>Total Payments to Out-of-State Tracks</b>	<b><u>\$ 4,418,555</u></b>	<b><u>\$ 246,585</u></b>	<b><u>\$ 4,225,810</u></b>	<b><u>\$ 1,889,814</u></b>	<b><u>\$ 1,960,799</u></b>	<b><u>\$ 12,741,563</u></b>
<b>Special Events:</b>						
Kentucky Derby	\$ 137,904	\$ 7,532	\$ 170,808	\$ 120,522	\$ 161,230	\$ 597,996
Preakness Stakes	45,838	2,800	71,210	43,951	53,262	217,061
Breeders Cup	91,804	5,748	44,422	35,927	29,749	207,650
<b>Total Special Events</b>	<b><u>\$ 275,546</u></b>	<b><u>\$ 16,080</u></b>	<b><u>\$ 286,440</u></b>	<b><u>\$ 200,400</u></b>	<b><u>\$ 244,241</u></b>	<b><u>\$ 1,022,707</u></b>
<b>Total Payments to All Tracks</b>	<b><u>\$ 12,982,436</u></b>	<b><u>\$ 745,684</u></b>	<b><u>\$ 12,647,392</u></b>	<b><u>\$ 5,977,031</u></b>	<b><u>\$ 5,994,816</u></b>	<b><u>\$ 38,347,359</u></b>



## NYS Regional Off-Track Betting Corporations Supplemental Information/Definitions

**Revenue:**

**Enterprise Fund:** Net revenue or loss from the corporations business enterprise. For Capital OTB the amount relates to the operation of a simulcast television channel. For Western OTB the amount relates to the operation of Batavia Downs Racetrack and Video Gaming Facility. For Suffolk OTB the amount relates to the operation of a Video Gaming Facility.

**Operating Expenses:**

**GASB 75:** Certain expense include amounts relating to the Government Accounting Standards Board Statement 75 (GASB 75). GASB 75 requires the recognition of Other Post Employment Benefits (OPEB).

<u>Expense</u>	<u>Capital</u>	<u>Catskill</u>	<u>Nassau</u>	<u>Suffolk</u>	<u>Western</u>	<u>Total</u>
Enterprise Fund	\$ (30,727)	\$ -	\$ -	\$ 2,301,694	\$ 196,114	\$ 2,467,081
Branch Expenses	(259,025)	-	507,384	187,918	136,282	572,559
General & Administrative	(322,158)	(9,928)	160,226	763,651	-	591,791
<b>Total</b>	<b>\$ (611,910)</b>	<b>\$ (9,928)</b>	<b>\$ 667,610</b>	<b>\$ 3,253,263</b>	<b>\$ 332,396</b>	<b>\$ 3,631,431</b>

**Section 516 Net Revenue Available for Distribution:** Amounts available after payment of allowable expenses that must be distributed to participating localities on a quarterly basis.

**General Notes:**

Reference to "section" relates to sections within the New York State Racing, Pari-Mutuel Wagering and Breeding Law.

**Distributable Surcharge**

In addition to Section 516 Net Revenue, corporations are required to distribute surcharge levied on winning payoffs to participating and other localities on a monthly basis. The following is a summary of the surcharge available for distribution as of 12/31/2021 for each corporation.

	<u>Capital</u>	<u>Catskill</u>	<u>Nassau</u>	<u>Suffolk</u>	<u>Western</u>	<u>Total</u>
Participating Localities	\$ 705,955	\$ 14,219	\$ 1,448,834	\$ 590,086	\$ 895,070	\$ 3,654,164
Other Localities	258,841	5,240	533,504	230,886	231,529	1,260,000
<b>Total Surcharge</b>	<b>\$ 964,796</b>	<b>\$ 19,459</b>	<b>\$ 1,982,338</b>	<b>\$ 820,972</b>	<b>\$ 1,126,599</b>	<b>\$ 4,914,164</b>

The above does not include surcharge retained by the corporation for corporate purposes or the capital acquisition fund.

Participating Localities are local governments within the Off-Track Betting Region that have elected to participate under Section 502 of the Racing, Pari-Mutuel Wagering and Breeding Law. Other Localities are local governments which have racetracks located within their borders and receive a portion of the surcharge.

## 2021 Nationwide Thoroughbred Purses

State	Gross Purses	No. of Races	Average Purse	Starters	Starts	Average Field	Average Starts Per Runner
New York	\$181,455,727	2,645	\$68,603	5,322	19,654	7.4	3.7
California	\$161,548,990	3,134	\$51,547	4,904	21,822	7	4.4
Kentucky	\$134,198,984	1,740	\$77,126	6,061	14,680	8.4	2.4
Florida	\$102,936,300	2,930	\$35,132	6,704	23,462	8	3.5
Pennsylvania	\$80,053,429	3,104	\$25,790	4,889	22,307	7.2	4.6
Louisiana	\$78,590,300	2,967	\$26,488	5,212	22,650	7.6	4.3
Maryland	\$57,611,158	1,442	\$39,952	3,308	10,865	7.5	3.3
Ohio	\$53,424,700	2,374	\$22,504	3,604	16,790	7.1	4.7
West Virginia	\$45,078,450	2,483	\$18,155	3,874	17,480	7	4.5
Arkansas	\$40,799,070	589	\$69,268	2,054	5,011	8.5	2.4
Indiana	\$31,292,235	998	\$31,355	2,235	7,043	7.1	3.2
New Jersey	\$27,577,263	597	\$46,193	1,820	4,469	7.5	2.5
Illinois	\$27,351,412	1,323	\$20,674	1,818	8,904	6.7	4.9
Texas	\$26,489,975	872	\$30,378	2,106	6,706	7.7	3.2
Oklahoma	\$26,333,825	1,036	\$25,419	2,068	7,809	7.5	3.8

Data provided courtesy of The Jockey Club. Purses include monies not won and returned to state breeders or other funds. Not all states are presented.

### 2021 Nationwide Harness Purses

State	Gross Purses Paid	Purse Races	Avg. Purses	Starters	Earnings per Starter	Avg. Won by Trotter	Avg. Won by Pacer
New York	\$96,537,856	7,935	\$12,166	4,764	\$20,264	\$18,986	\$20,800
Ohio	\$78,483,538	6,730	\$11,662	5,021	\$15,631	\$15,699	\$15,590
Pennsylvania	\$73,811,764	6,060	\$12,180	5,521	\$13,369	\$14,371	\$12,777
New Jersey	\$46,705,005	2,179	\$21,434	2,897	\$16,122	\$21,253	\$13,630
Indiana	\$34,999,738	2,210	\$15,837	2,200	\$15,909	\$18,164	\$14,933
Delaware	\$25,895,891	1,957	\$13,232	1,580	\$16,390	\$16,430	\$16,376
Massachusetts	\$14,777,137	1,075	\$13,746	885	\$16,697	\$18,034	\$16,186
Kentucky	\$14,204,585	617	\$23,022	1,145	\$12,406	\$14,818	\$10,821
Maryland	\$8,961,773	1,323	\$6,774	1,071	\$8,368	\$9,740	\$8,094
Florida	\$7,687,484	1,078	\$7,131	871	\$8,826	\$9,169	\$8,622
Illinois	\$7,395,285	807	\$9,164	894	\$8,272	\$10,713	\$7,485
Maine	\$4,750,302	934	\$5,086	653	\$7,275	\$9,376	\$6,806
Minnesota	\$4,147,622	468	\$8,862	363	\$11,426	\$15,426	\$10,165
Michigan	\$3,969,986	620	\$6,403	595	\$6,672	\$7,737	\$6,348
California	\$2,187,224	501	\$4,366	341	\$6,414	\$8,349	\$6,319

Data provided courtesy of the United States Trotting Association. This only includes races for pari-mutuel meets. Not all states are presented.

## Office of Equine Medicine

### **Scott E. Palmer, VMD** **Equine Medical Director**

Scott E. Palmer, VMD, a renowned veterinarian with more than three decades of experience in providing medical care for horses, oversees the health and safety of horses at all New York State Thoroughbred and Standardbred (harness) racetracks.

As New York's Equine Medical Director, Dr. Palmer is responsible for all aspects of equine health, safety, and welfare at New York racetracks and advises the Gaming Commission on equine medication policies as well as the safety and condition of racetrack facilities and surfaces. He supervises all on-track regulatory veterinarians as well as the New York State Equine Drug Testing Program laboratory. He oversees equine testing procedures, ensures compliance with regulatory veterinary protocols, investigates incidents, and monitors the Gaming Commission's necropsy program.

Dr. Palmer also serves as an Adjunct Professor at Cornell University's College of Veterinary Medicine, where he is responsible for developing and coordinating continuing education programs for veterinarians and trainers related to medication and equine injuries. He coordinates research on equine sports medicine topics and collaborates with faculty on epidemiological studies to analyze equine safety issues. Since his graduation from the University of Pennsylvania School of Veterinary Medicine in 1976, Dr. Palmer has worked as a staff clinician at the New Jersey Equine Clinic, serving as the Hospital Director since 1997. He is a two-time recipient of the New Jersey Equine Practitioners Veterinarian of the Year award, as well as a recipient of the AAEP President's Award in 2009 and the AAEP Distinguished Service Award in 2010.

Dr. Palmer is board certified in equine practice by the American Board of Veterinary Practitioners. He has authored dozens of peer-reviewed publications and is a featured speaker at veterinary conferences worldwide. He is a member of several professional organizations and has held leadership positions in many, including the American Veterinary Medical Association, the American Association of Equine Practitioners, the American Board of Veterinary Practitioners, the New Jersey Veterinary Medical Association, and the New Jersey Association of Equine Practitioners.

Dr. Palmer chaired the New York Task Force on Racehorse Health and Safety, which was formed in 2012 in the wake of 21 equine fatalities during Aqueduct's 2011-12 Winter Meet. The New York State Equine Medical Director position was established in 2013 as a key recommendation of that Task Force. Dr. Palmer serves as a Board Member for the NTRA Safety and Integrity Alliance Advisory Board and the Thoroughbred Charities of America. He previously served on the ARCI Special Task Force on Medication and chaired the International Summit on Race Day Medication as well as the Ad-Hoc RMTTC Committee on Race Day Security and served two terms as a member of the Grayson-Jockey Club Research Advisory Committee.

## Equine Drug Testing

Equine drug testing is mandated by Racing, Pari-Mutuel Wagering and Breeding Law Section 902.

The Equine Drug Testing Program (EDTP) for Thoroughbred and harness racing in New York State is performed by Morrisville State College under contract with New York State. The EDTP at Morrisville State College continues to be one of the leading equine drug testing programs in the world.

When the EDTP detects and confirms the presence of a prohibited substance, the laboratory immediately informs the Division of Horse Racing and Pari-Mutuel Wagering staff and the Commission's General Counsel's office. Division staff will immediately inform the steward or presiding judge at the racetrack where the horse's sample originated, along with other appropriate Commission staff. An investigation into the matter is begun after the steward or presiding judge identifies the horse and its trainer.

The steward or presiding judge matches the sample identifying numbers to the previously locked documentation of collected samples. After identification, investigation into the circumstances, including interviews with involved parties, begins. The trainer is afforded the option of having a residual sample of the original, if available, tested at an approved laboratory of his or her choice at his or her expense. After the investigation is completed and all other information is gathered and studied, the licensee, if appropriate, is assessed a penalty by the State steward or presiding judge. The licensee may challenge the penalty through a hearing process. After receipt of the hearing officer’s completed report, the Commission renders a decision.

A listing of commonly used medicines in the equine racing world is contained within the applicable rules. Also contained are the number of hours “out” (before race day) that these listed drugs may be administered. The only allowable medication on race day in New York is furosemide. Furosemide is permitted to be administered only to horses properly enrolled in a furosemide medication program.

### 2021 Summary Post-Race Drug Report

Race Day Positives*	Standardbred	Thoroughbred	Total
FLUMETHASONE	8	1	9
FLUNIXIN	1	0	1
FUROSEMIDE	1	0	1
GLAUCINE	1	0	1
HEPTAMINOL	3	0	3
METHOCARBAMOL	4	1	5
PHENYLBUTAZONE	0	1	1
PREDNISOLONE	0	3	3
TESTOSTERONE	6	0	6
TRENBOLONE	1	0	1
<b>TOTAL</b>	<b>25</b>	<b>6</b>	<b>31</b>

\* Includes Sire Stakes County Fair Series

## Division of Lottery

The Division of Lottery is responsible for the administration of all traditional lottery games.

### Traditional Lottery Games

The New York Lottery offers players the chance to participate in various Draw and Scratch-off games through a network of licensed sales agents. Offerings include nine draw games as well as the introduction of approximately 40 new instant games each year. The wide variety of Lottery games offer different methods of play, ranges of jackpot prizes, and convenience aspects that make playing the games fun, easy, and exciting entertainment.

#### MULTI-JURISDICTIONAL DRAW GAMES

**MEGA MILLIONS** is a multi-jurisdictional high jackpot game in which the New York Lottery participates with 47 other U.S. lottery jurisdictions. Draws are held twice per week, every Tuesday and Friday. Mega Millions is also available by subscription. The largest advertised FY20-21 Mega Millions jackpot was \$731 Million.

**POWERBALL** is a multi-jurisdictional high jackpot game in which the New York Lottery participates with 48 other U.S. lottery jurisdictions. Draws are held twice per week, every Wednesday and Saturday. The largest advertised FY20-21 Powerball jackpot was \$1.050 Billion.

**CASH4LIFE** is a multi-jurisdictional “for life” game in which New York Lottery participates with 9 other U.S. lottery jurisdictions. Draws were held twice per week, every Monday and Thursday. Since July 2019, drawings have been held every night. Cash4Life is also available by subscription.

#### NEW YORK DRAW GAMES

**LOTTO** is a jackpot game. Draws are held twice per week, every Wednesday and Saturday. Lotto is also available by subscription. The largest advertised FY20-21 Lotto jackpot was \$15.7 Million.

**PICK 10** is a daily draw game with a chance to win up to \$500,000.

**TAKE 5** is a parimutuel game with draws held every night. An add-on Instant Win feature allows players to win instantly.

**NUMBERS and WIN 4** are lower top prize New York daily games, drawn twice daily. An add-on Instant Win feature allows players to win instantly.

**QUICK DRAW** is a social game with draws held every four minutes on a daily basis except for the half-hour from 3:30 a.m. to 4:00 a.m.

#### SCRATCH-OFF GAMES

Scratch-Off Games are played by scratching a covering from pre-printed tickets to reveal prizes. There are a large variety of themes and price points available with up to 51 games for sale at any given time in FY20-21.

### Lottery Sales Agents

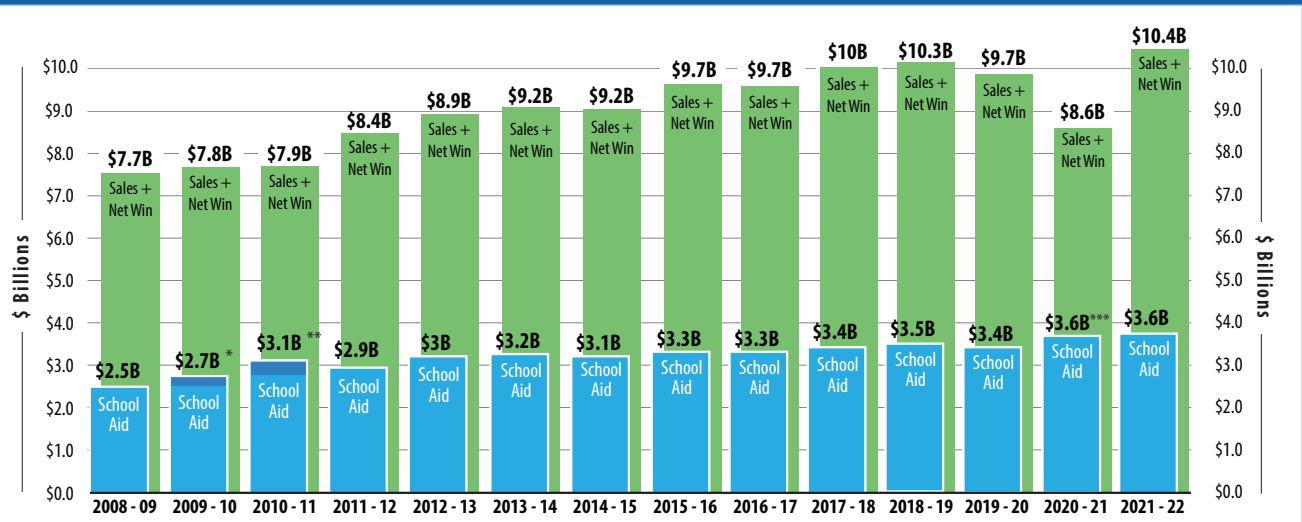
The Division’s network of nearly 14,600 licensed sales agents brings Lottery games to New Yorkers 18 years of age or older across the State. Sales agents earn 6% commission on Lottery sales.

## Fiscal Year 2021-2022 Year-End Review

**Gaming Commission**

The New York State Gaming Commission's Lottery and Video Lottery Gaming operations closed out Fiscal Year 2021-22 with \$10.4 billion in combined sales and net win and aid to education of \$3.6 billion for its sole beneficiary, New York's K-12 schools.

**LEADING THE NATION IN AID TO EDUCATION**



\* Includes a one-time gain from investment bond swaps of \$63.1 million.  
 \*\* Includes a \$380 million licensing fee from Resorts World New York and a one-time gain from investment bond swaps of \$15.3 million.  
 \*\*\* Includes a one-time Lottery Aid Guarantee transfer in the amount of \$692.8 million to offset Covid-19 related revenue decline.

**FUN, GAMES AND FUNDS RAISED BY GAME/VIDEO LOTTERY FACILITY**

**Jackpot Games**

Total Sales: \$294,562,279  
Education Aid: \$119,222,978

Total Sales: \$358,376,004  
Education Aid: \$145,051,345

Total Sales: \$120,868,815  
Education Aid: \$48,921,200

Total Sales: \$57,114,435  
Education Aid: \$28,828,297

**Daily Games**

Total Sales: \$958,641,741  
Education Aid: \$483,870,826

Total Sales: \$948,111,144  
Education Aid: \$478,555,546

Total Sales: \$225,050,346  
Education Aid: \$113,593,319

Total Sales: \$34,142,835  
Education Aid: \$17,233,468

Total Sales: \$663,531,161  
Education Aid: \$202,208,635

**Scratch-Off Games**

Total Sales: \$4,517,682,111  
Education Aid: \$968,386,546

**Video Gaming Facilities**

Net Win: \$72,108,993  
Education Aid: \$29,477,543

Net Win: \$624,605,110  
Education Aid: \$327,162,844

Net Win: \$115,263,458  
Education Aid: \$50,699,932

Net Win: \$64,471,201  
Education Aid: \$23,131,718

Net Win: \$248,735,349  
Education Aid: \$116,605,016

Net Win: \$263,395,102  
Education Aid: \$123,477,383

Net Win: \$628,452,900  
Education Aid: \$263,190,729

Net Win: \$133,578,894  
Education Aid: \$59,504,138

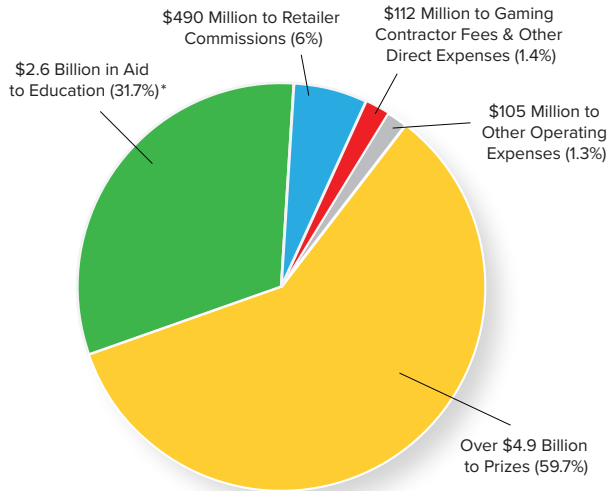
Net Win: \$8,983,874  
Education Aid: \$3,465,618

**WHERE DO LOTTERY DOLLARS GO?**



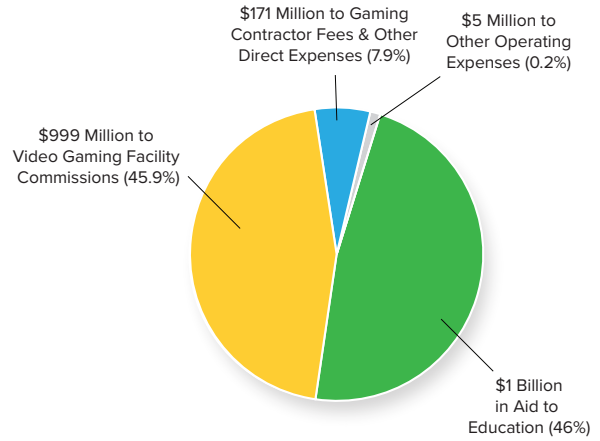
**Total New York Lottery Sales & VLT Net Win: \$10.4 Billion - Aid to Education: \$3.6 Billion**

**Traditional Lottery (FY 2021-2022)**  
\$8.2 Billion in Sales



**Video Lottery Gaming (FY 2021-2022)**  
\$2.2 Billion in Video Gaming Net Win

Video Gaming Net Win	
Credits Played	\$37.9 Billion
Credits Won	\$35.7 Million
Net Win	\$2.2 Billion



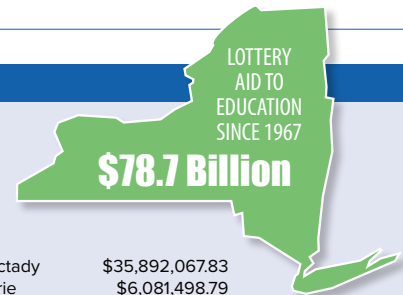
\* Includes \$90 million in General Fund Aid Guarantee

**LOTTERY AID TO EDUCATION BY COUNTY (FY 2021-2022)**

Albany	\$50,246,030.95
Allegany	\$12,194,937.46
Broome	\$44,214,150.71
Cattaraugus	\$22,059,248.84
Cayuga	\$14,345,120.97
Chautauqua	\$31,730,892.26
Chemung	\$19,223,928.51
Chenango	\$13,903,518.22
Clinton	\$17,553,593.00
Columbia	\$5,682,558.16
Cortland	\$10,568,692.45
Delaware	\$6,966,579.57
Dutchess	\$47,037,360.75
Erie	\$200,982,145.75
Essex	\$3,051,619.99
Franklin	\$11,437,695.68
Fulton	\$12,455,200.66
Genesee	\$13,246,544.70
Greene	\$6,830,112.37
Hamilton	\$100,525.64
Herkimer	\$15,829,536.16

Jefferson	\$28,592,094.82
Lewis	\$6,667,673.73
Livingston	\$11,841,460.23
Madison	\$14,946,785.29
Monroe	\$176,438,061.86
Montgomery	\$13,466,130.42
Nassau	\$172,704,552.46
New York City*	\$1,257,264,823.39
Niagara	\$47,647,415.13
Oneida	\$59,986,648.28
Onondaga	\$113,247,576.54
Ontario	\$22,106,703.32
Orange	\$92,262,025.93
Orleans	\$10,392,820.95
Oswego	\$32,826,254.86
Otsego	\$10,017,833.08
Putnam	\$14,007,548.86
Rensselaer	\$31,831,140.54
Rockland	\$40,171,157.17
St Lawrence	\$26,485,216.18
Saratoga	\$36,848,322.34

Schenectady	\$35,892,067.83
Schoharie	\$6,081,498.79
Schuyler	\$2,609,756.51
Seneca	\$6,531,087.82
Steuben	\$24,962,871.37
Suffolk	\$270,015,864.16
Sullivan	\$12,776,917.24
Tioga	\$12,965,389.00
Tompkins	\$12,927,777.45
Ulster	\$28,854,696.74
Warren	\$9,122,534.93
Washington	\$13,773,942.25
Wayne	\$23,391,685.34
Westchester	\$110,125,461.72
Wyoming	\$6,499,646.70
Yates	\$2,056,547.22



The above amounts are based on the New York State Education Department's Division of Aid to Localities for Education from the State Lottery Fund as required by law. For a complete listing visit [nlottery.ny.gov](http://nlottery.ny.gov).

Lottery revenue is distributed to local school districts by the same statutory formula used to distribute other state aid to education. It takes into account both a school district's size and its income level; larger, lower-income school districts receive proportionately larger shares of Lottery school funding.

\*Includes Bronx, Kings, New York, Queens and Richmond Counties.

## Minority- and Women-Owned Businesses

Pursuant to Articles 15-A and 17-B of the Executive Law and Parts 140 through 144 of Title 5 of the New York Codes, Rules and Regulations concerning Minority- and Women-Owned Business Enterprises (MWBE) and Service-Disabled-Veteran-Owned business (SDVOB), the Commission promotes and encourages economic opportunities for MWBE and SDVOB firms. The Commission’s goal for MWBE procurement is 30%, and the goal for SDVOB procurement is 6% of all State contracts. The Commission reached a 25.66% goal for MWBE and a 15.73% goal for SDVOB.

Commission regulations (9 NYCRR Section 5311) also require commercial casinos to develop a utilization plan and quarterly reporting while tasking the Commission with monitoring the effectiveness of such plans. The Commission established the Contract Compliance Office to help MWBE’s and SDVOB’s find contract opportunities, as well as assist in setting these goals in our agency contracts. The Office also provides guidance and assistance to the commercial casinos to find opportunities for MWBE’s.

MWBE FY2020-21	TOTAL MWBE'S	TOTAL \$
Gaming Commission	60	\$38,999,105
Commercial Gaming	4	\$192,192
<b>TOTAL</b>	<b>64</b>	<b>\$45,591,036</b>

SDVOB's FY2020-21	TOTAL MWBE'S	TOTAL \$
Gaming Commission		\$203,323.50
<b>TOTAL</b>	<b>1</b>	<b>\$203,323.50</b>

## Bureau of Licensing

New York State requires the majority of operators, agents and employees associated with in-state horse racing; traditional and video lottery gaming; commercial gaming; and sports wagering activities to be licensed. The Commission’s Licensing Bureau reviews every application before a license is issued. By statute, fingerprinting is required of each applicant. Where it is believed that an applicant’s background or licensee’s conduct may warrant a finding that the applicant’s actions would be inconsistent with the public interest or the best interest of New York’s gaming operations, a thorough investigation is conducted before action is taken in the form of a license denial, suspension, or revocation.

### 2021 Horse Racing and Pari-Mutuel Wagering Licenses Granted

Occupation	Harness	Thoroughbred	Total
APPRENTICE JOCKEY		7	7
ASST. TRAINER		194	194
AUTHORIZED AGENT		84	84
CLEANING SERVICE	76	45	121
DRIVER	218		218
EXERCISE RIDER		385	385
FARRIER	15	37	52
FOOD SERVICE	86	72	158
GAP ATTENDANT		2	2
GENERAL SERVICES	354	384	738
GROOM	879	1130	2009
JOCKEY		110	110
JOCKEY AGENT		14	14
MUTUEL CLERK	67	226	293
OWNER ORIGINAL	280	842	1122



Occupation	Harness	Thoroughbred	Total
OWNER RENEWAL	1410	2034	3444
PEACE OFFICER	56	115	171
PRIVATE TRAINER	2	4	6
PROVISIONAL DRIVER	40		40
QUALIFIER DRIVER	21		21
RACING OFFICIAL		63	63
SECURITY	128	105	233
STABLE EMPLOYEE	4	907	911
TOTE EMPLOYEE	413	421	834
TOTE OFFICER	18	19	37
TOTE OTB	5	4	9
TRACK MGT.	66	20	86
TRAINER	576	254	830
VETERINARIAN	16	36	52
<b>TOTALS</b>	<b>4730</b>	<b>7514</b>	<b>12244</b>

### 2021 Commercial Casinos Licenses Granted

License Type	Number Issued
Non-Gaming	589
Gaming	776
Key	125

### 2021 Indian Gaming Certifications Issued

License Type	Oneida	Seneca	Mohawk
Non-Gaming	789	229	31
Gaming	507	416	0
Key Gaming	19	30	2
Non-Key Gaming	0	0	119

### 2021 Video Lottery Licenses Issued

License Type	Number Issued
Service level	62
Gaming level	43
Key level	237

### 2021 Lottery Licenses Issued

License Type	Number Issued
New Retailer	1074

### 2021 Charitable Gaming Licenses Issued

License Type	Number Issued
Supplier	38

## Responsible Gaming

The Commission is a founding member of New York’s Responsible Play Partnership (RPP), which also includes the New York State Office of Alcohol and Substance Abuse Services and the New York Council on Problem Gambling. The goal of the partnership is to address the issues surrounding problem gambling, promote responsible gaming practices, and ensure help is available for those who need it. For gaming venues, this includes undertaking proper outreach measures in addition to ensuring compliance with all rules and regulations. For the Commission, this includes incorporating global Responsible Gaming best practices into the daily operations of all Divisions and committing ourselves to continuous improvement in all fundamental areas, including problem gambling/underage play prevention, voluntary self-exclusion and responsible play/gifting/sales messaging. The Commission is charged with developing and distributing problem gambling/responsible gaming messaging on a regular basis to all New Yorkers.

### 2021 RPP advocacy campaign:

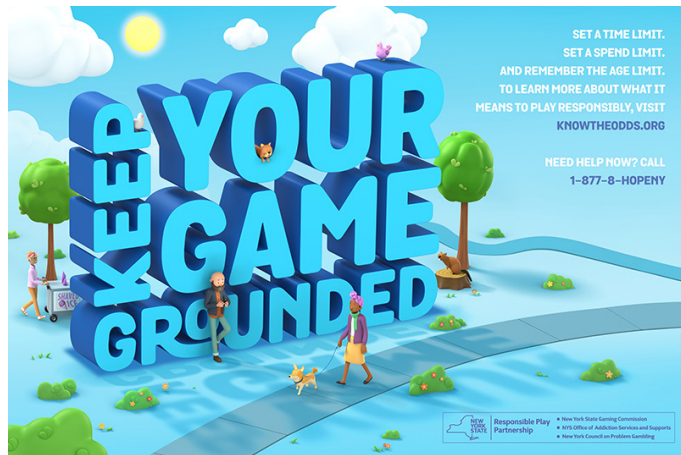
In 2021, the RPP reutilized its popular “Keep Your Game Grounded” advocacy campaign which used focus group-inspired messaging to connect the ideas of playing responsibly and staying grounded.

The campaign uses a mix of evidence-based examples of what it means to Play Responsibly, i.e. setting both a time limit and a spend limit, to demonstrate the simple yet important factors that can help most gamblers maintain control over their play.

A clear call-to-action invites gamblers to learn more about Responsible Play at [KNOWTHEODDS.org](http://KNOWTHEODDS.org).

The 2021 campaign generated an earned media value of \$380,000 (which does not include New York State Owned assets) and produced an estimated 38,000,000 impressions over its nine-week run.

While advocacy campaigns like this one cannot match the value of actual gambling prevention, treatment, and recovery programming, they do reduce the need for such expenditures by the New York Council on Problem Gambling and OASAS, freeing them to fund other worthy endeavors.



2021 Campaign Poster

[www.ny.gov/NYResponsibleGaming](http://www.ny.gov/NYResponsibleGaming) houses information regarding NY’s free and confidential HOPEline, an addictions referral hotline administered by OASAS as well as a wide array of Responsible Gambling materials, including:

- An industry-standard problem gambling self-assessment tool
- The Statewide Voluntary Self-Exclusion Form and mail-in info
- Links to prevention and treatment resources
- A sampling of popular gambling myths and related facts

The Commission is a co-founder of a business roundtable with some of the state’s largest business groups to reinforce the Commission’s age verification processes and procedures across all gaming divisions.

The Commission also participates in national and statewide problem gambling prevention and responsible gaming advocacy campaigns, including Problem Gambling Awareness Month, Disordered Gambling Screening Day, and Gift Responsibly campaigns sponsored by the National Council on Problem Gambling.

## Rulemaking

The Commission’s Office of Counsel provides legal advice to ensure compliance with legal requirements and to reduce exposure to legal risks and liabilities. The Office represents the Commission as legal counsel in governmental and judicial proceedings and advocating and defending its interests in those proceedings. In addition, the Office of Counsel manages the Commission’s rulemaking activities across all Divisions.

### Rules adopted in 2021:

SGC #	Name of Rule	Adopted at Gaming Commission Meeting	NYS Register Effective Date
SGC-50-20-00007-E	Charitable gaming games of chance payment methods (emergency)	November 30, 2020	January 4
SGC-40-20-00001-P	Veterinary Technicians	January 26	February 10
SGC-44-20-00012-P	Lottery couriers instant tickets	January 26	February 10
SGC-50-20-00007-P	Charitable gaming games of chance payment methods (consensus)	March 15	March 31
SGC-50-20-00006-P	Charitable gaming games of chance participation (consensus)	March 15	March 31
SGC-09-21-00012-P	Thresholds for controlled therapeutic medications	May 17	June 2
SGC-09-21-00015-P	Charitable gaming implementation and updates (bingo)	May 17	June 2
SGC-09-21-00013-P	Casino table games amendments	May 17	June 2
SGC-09-21-00011-P	Clenbuterol regulation	May 17	June 2
SGC-09-21-00014-P	Lasix administrations on race day	May 17	October 8
SGC-17-21-00001-P	Powerball draw frequency	June 29	July 14
SGC-29-21-00010-P	VLG marketing allowance and cross-reference update	November 8	November 24
SGC-35-21-00010-P	Mobile sports wagering	November 8	November 24

### Explanation of 2021 Rulemaking

**SGC-50-20-00007-E – Charitable gaming games of chance payment methods (emergency).** The Commission adopted emergency rules to permit organizations authorized to conduct charitable gaming to accept, if they so choose, payment for a chance by personal check, credit card or debit card, as authorized by statute.

**SGC-40-20-00001-P – Veterinary Technicians.** The Commission adopted amendments to various Commission rules that would permit the supervised use of veterinarian technicians at New York racetracks.

**SGC-44-20-00012-P – Lottery couriers instant tickets.** The Commission adopted rules to allow licensed lottery courier services to purchase and deliver instant tickets to customers, in addition to draw game tickets.

**SGC-50-20-00007-P – Charitable gaming games of chance payment methods.** The Commission adopted, through consensus rulemaking, rules to permit organizations authorized to conduct charitable gaming to accept, if they so choose, payment for a chance by personal check, credit card or debit card, as authorized by statute.

**SGC-50-20-00006-P — Charitable gaming games of chance participation.** The Commission adopted, through consensus rulemaking, rules to permit organizations authorized to conduct charitable gaming to accept, if they so choose, payment for a chance by personal check, credit card or debit card, as authorized by statute.

**SGC-09-21-00012-P — Thresholds for controlled therapeutic medications.** The Commission adopted rule amendments to conform Commission rules on thresholds for controlled therapeutic medications to national model rule amendments made by the Association of Racing Commissioners International, Inc.

**SGC-09-21-00015-P — Charitable gaming implementation and updates (bingo).** The Commission adopted rules to enhance the regulation of bingo by harmonizing regulations with current statutory language. The rules also limited the sale of bingo opportunities to the same day of the occasion and prohibited presale; eliminated a prohibition on payment for bingo opportunity by check; clarified that a bonus ball in bingo must remain posted throughout all bingo games during such bingo occasion; increased the maximum number of electronic bingo aids allowed; and eliminated verbatim repetition of statute.

**SGC-09-21-00013-P — Casino table games amendments.** The Commission adopted amendments to various casino table games regulations to improve operations, keep up with industry trends and enhance attractiveness to high-limit players. The amendments allowed for Local Area Progressive controllers to be implemented to coordinate the payment of a shared progressive jackpot between two or more table games at the same commercial casino; added chip denominations; clarified dealer options and patron wagering in a discrete wager offered in the game of blackjack; provided a non-generic optional wager of match the dealer and pay tables for the “Spanish 21” table game; added pay tables for the baccarat game dragon bonus wager; required a midi baccarat table to have a form of a discard rack; clarified the rules for optional bonus wagers and optional dragon bonus wagers in mini and midi baccarat games; re-organized certain definitions; and corrected a reference.

**SGC-09-21-00011-P — Clenbuterol regulation.** The Commission adopted rules to restrict clenbuterol administrations to Thoroughbred horses in a manner that will prevent the misuse of the drug for performance enhancing effects.

**SGC-09-21-00014-P — Lasix administrations on race day.** The Commission adopted rules to formalize practice that race-day furosemide (a/k/a Lasix) administration to race horses is provided by independent, third-party veterinarians who are not caring for the horses of a trainer or owner who participates at the race meeting.

**SGC-17-21-00001-P — Powerball draw frequency.** The Commission adopted a rule to allow for an increase in the frequency of drawings in the Powerball game, to be conducted at times, places and manners authorized by the Multi-State Lottery Association.

**SGC-29-21-00010-P — VLG marketing allowance and cross-reference update.** The Commission adopted amendments to the video lottery gaming regulations to reflect amendments to Tax Law 1612 concerning marketing allowances and capital awards for video lottery gaming agents.

**SGC-35-21-00010-P — Mobile sports wagering.** The Commission adopted comprehensive rules to govern mobile sports wagering and related amendments to the regulations governing wagering in sports lounges at the licensed commercial casinos.